

# Lightweight Aluminum Alloy Adapters

## Double Swivel Female...

...for adapting from male to female. Made from extruded lightweight aluminum alloy, then hardcoated to resist corrosion and abrasion. **Ship. wt. 1-6 lbs.**



AC725 / Double Female

F	1"	1 1/2"	2"	2 1/2"	3"	4"	4 1/2"	5"	6"
1"	•								
1 1/2"	•	•							
2"		•	•						
2 1/2"		•	•	•					
3"			•	•	•				
4"				•	•	•			
4 1/2"				•	•	•	•		
5"				•	•	•	•	•	
6"				•	•	•	•	•	•

## Double Male...

...for adapting from female to male. Made from extruded lightweight aluminum alloy, hardcoated to resist corrosion and abrasion. **Ship. wt. 1-6 lbs.**



AC726 / Double Male

M	1"	1 1/2"	2"	2 1/2"	3"	4"	4 1/2"	5"	6"
1"	•	•	•	•					
1 1/2"	•	•	•	•					
2"		•	•	•	•				
2 1/2"	•	•	•	•		•			
3"			•	•	•	•			
4"				•	•	•	•		
4 1/2"				•	•	•	•	•	
5"				•	•	•	•	•	•
6"						•	•	•	•

## Long Handle Double Swivel Female...

...for adapting male hydrant or suction thread to female hose thread. Made from extruded lightweight aluminum alloy, hardcoated to resist corrosion and abrasion. **Ship. wt. 1-6 lbs.**



AC727 / Long Handle Double Female

F	2 1/2"	3"	4"	4 1/2"	5"	6"
2 1/2"	•					
3"	•	•				
4"	•	•	•			
4 1/2"	•	•	•	•		
5"	•	•	•	•	•	
6"	•	•	•	•	•	•

## Rigid Rocker Lug Female...

...to male adapter. If an adapter is ordered with the same size/thread on both ends it will only serve as an extension. Made from extruded aluminum alloy, hardcoated to resist corrosion and abrasion. **Ship. wt. 1-6 lbs.**



AC728 / Male

F	1"	1 1/2"	2"	2 1/2"	3"	4"	4 1/2"	5"	6"
1"	•	•	•	•					
1 1/2"	•	•	•	•	•				
2"		•	•	•	•				
2 1/2"	•	•	•	•		•			
3"	•	•	•	•	•	•			
4"				•	•	•	•		
4 1/2"				•	•	•	•	•	
5"				•	•	•	•	•	•
6"				•	•	•	•	•	•

## Long Handle Swivel Female...

...to rocker lug rigid female. For adapting male to female. Made from extruded lightweight aluminum alloy, hardcoated to resist corrosion and abrasion. **Ship. wt. 1-6 lbs.**



AC729 / Rigid Female

SF	1 1/2"	2"	2 1/2"	3"	4"	4 1/2"	5"	6"
2 1/2"	•	•						
3"			•	•				
4"			•	•	•			
4 1/2"			•	•	•	•		
5"			•	•	•	•	•	
6"			•	•	•	•	•	•

## Rocker Lug Swivel Female...

...to rocker lug rigid female. For adapting male to female. Made from extruded lightweight aluminum alloy, hardcoated to resist corrosion and abrasion. **Ship. wt. 1-6 lbs.**



AC730 / Rocker Lug Female Adapter

SF	1 1/2"	2"	2 1/2"	3"	4"	4 1/2"	5"	6"
1 1/2"	•	•	•					
2"	•	•	•	•				
2 1/2"	•	•	•	•	•			
3"			•	•	•	•		
4"			•	•	•	•	•	
4 1/2"			•	•	•	•	•	•
5"			•	•	•	•	•	•
6"			•	•	•	•	•	•

## Rigid Long Handle Female...

...to male adapter. For changing hydrant or suction hose threads or sizes. Made from lightweight aluminum alloy, hardcoated to resist corrosion and abrasion. **Ship. wt. 1-6 lbs.**



AC731 / Male

F	2 1/2"	3"	4"	4 1/2"	5"	6"
2 1/2"		•	•	•	•	•
3"	•	•	•	•	•	•
4"	•	•	•	•	•	•
4 1/2"	•	•	•	•	•	•
5"	•	•	•	•	•	•
6"	•	•	•	•	•	•

## Long Handle Swivel Female...

...to male adapter. Made from extruded lightweight aluminum alloy, hardcoated to resist corrosion and abrasion. **Ship. wt. 1-6 lbs.**



AC732 / Male

F	2 1/2"	3"	4"	4 1/2"	5"	6"
2 1/2"	•	•	•	•	•	•
3"	•	•	•	•	•	•
4"	•	•	•	•	•	•
4 1/2"	•	•	•	•	•	•
5"	•	•	•	•	•	•
6"	•	•	•	•	•	•

NST shipped unless otherwise specified. Prices other than National Standard (NH or NST) or Iron Pipe (NPSH, IPT or SIPT) available on request.

## Darley Brass Hex Hose Adapters

AM137 / NPT MALE X NST MALE

NPT MALE	NST MALE				
	1"	1½"	2"	2½"	3"
1"	•				
1½"	•	•			
2"		•	•		
2½"		•		•	
3"				•	•



AM138 / NPT FEMALE X NST MALE

NPT FEMALE	NST MALE				
	1"	1½"	2"	2½"	3"
1"	•				
1½"		•			
2"		•			
2½"				•	
3"				•	•

Note: NPT has a tapered thread and is used for plumbing applications. Requires tape or pipe sealant.

## Hydrant and Suction Hose Connections

B268 has a double swivel with long handles on both ends (pin lugs on one end or both ends same price). B269 is a solid fitting with long handles (pin lugs same price). Chrome plated brass. Ship. wt. 21 lbs.

B268 / NST FEMALE X NST FEMALE

NST FEMALE	NST FEMALE			
	4"	4½"	5"	6"
2½"	•	•	•	•
4"	•	•	•	•
4½"		•	•	•
5"			•	•



B269 / NST MALE X NST FEMALE

NST MALE	NST FEMALE			
	4"	4½"	5"	6"
2½"	•	•	•	•
4"	•	•	•	•
4½"		•	•	•
5"			•	•
6"				•



## Long Handle Chrome Suction Caps

AW060	Chrome 4" NH Cap
AW061	Chrome 4½" NH Cap
AW062	Chrome 5" NH Cap
AW063	Chrome 6" NH Cap



## Aluminum Chrome Caps

Chrome-plated aluminum hose caps include chain. NST thread standard. Ship. wt. 1 lb.

AW089	1" Chrome Cap
AW090	1½" Chrome Cap
AW091	2" Chrome Cap
AW092	2½" Chrome Cap



## Double Male and Double Female Connections

Ship. wt. 2 lbs.

CHROME PLATED/BRASS DOUBLE MALE

B24301	2½", Chrome, NST
B24302	1½", Chrome, NST
B24303	2½", Chrome, Other Thread
B24304	1½", Chrome, Other Thread
B24305	2½", Brass, Any Thread
B24306	1½", Brass, Any Thread

CHROME PLATED/BRASS DOUBLE FEMALE

B24401	2½", Chrome, NST
B24402	1½", Chrome, NST
B24403	2½", Chrome, Other Thread
B24404	1½", Chrome, Other Thread
B24405	2½", Brass, Any Thread
B24406	1½", Brass, Any Thread



ADAPTERS & FITTINGS

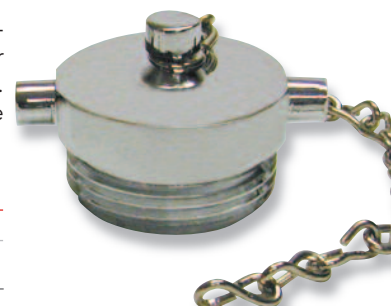
## Hose Plug for Female Thread

Specify finish, thread and with or without chain. Available in rough brass or chrome-plated. NST thread standard. Prices for other threads are available on request. Ship. wt. 3 lbs.

Cat# Size

L877 1½"

L877 2½"



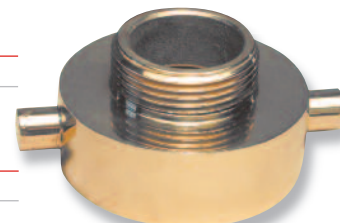
## Hose Reducers

CHROME PLATED BRASS

42B04	1½" NST x ¾" GHT
42B	2½" NST x 1½" NST

POLISHED BRASS

42B01	1½" NST x ¾" GHT
42B02	2½" NST x 1" NST
42B03	2½" NST x 1½" NST



## Chrome-Plated Hose Caps

Chrome-plated brass hose caps include chain. NST thread standard. Ship. wt. 1 lb.

B52600	Hose Cap, 1"
B52601	Hose Cap, 1½"
B52602	Hose Cap, 2½"
B52603	Hose Cap, 3"



## Lexan Threaded Caps

Cut the cost of theft, while providing maximum protection. Includes sturdy, plated attaching chain and inside gasket. NST, SIPT(NPSH). Red only.

U81401	1½" Threaded Cap
U81402	2½" Threaded Cap



## Angle and Suction Elbows

### Suction Elbows Allow Carrying Pre-Connected Suction Hose

Angle elbows are used on the discharge gate of a pumper to relieve strain and prevent kinking of hose. Suction elbows allow the speed and convenience of pre-connected suction hose. Rocker lug swivel. *Ship. wt. 3 lbs.*

- ▶ Prevent kinking
- ▶ Relieve hose strain



R477	Angle Elbow, 2 1/2" 45°, Chrome
R479	Suction Elbow, 2 1/2", 90°, Chrome

## Suction Elbow Swivel Female to Male

Ideal for fire apparatus with front suction connections. Aluminum elbows from 2 1/2" through 6". Long handle female swivel x male rigid standard. Specify NST, NPSH or NPT threads. Call for pricing on special threads, Storz fittings and/or rocker lug design. *Ship. wt. 4-7 lbs.*



AS125 - SPECIFY 45° or 90°

FEMALE	MALE				
	2 1/2"	4"	4 1/2"	5"	6"
2 1/2"	•	•	•	•	
4"	•	•	•	•	•
4 1/2"	•	•	•	•	•
5"	•	•	•	•	•
6"		•	•	•	•

## British Instantaneous Fittings

Darley offers a complete line of British Instantaneous fittings. These models are available in lightweight alloy. Fittings have hard-coat anodized finish. All 2 1/2" connections are made to conform to the BS336 standard. *Ship. wt. 3 lbs.*



BITF (British Instantaneous Fittings)

AJ089	2 1/2" BITF x 2 1/2" MNST Fitting
AJ088	2 1/2" BITM x 2 1/2" MNST Fitting
AJ087	2 1/2" BITM x 2 1/2" FNST Fitting
BD006	2 1/2" BITF x 2 1/2" FNST Fitting
BD007	2 1/2" BIT Cap
BD008	2 1/2" BIT Plug

## Neoprene Gaskets

F850 Neoprene Face Gaskets, for cap and female swivels, remain fresh and resilient for years and will not swell or distort out of shape. R664 Tail Gaskets for the coupling bowl are made of a "livelier" Neoprene to prevent "bulge out" under the expansion ring. *Ship. wt. 1 lb.*



RECOUPLING GASKETS FOR HOSE / Sold per dozen

R664	1 1/2"DJ	1 1/2"SJ	2 1/2"DJ	2 1/2"SJ	3"DJ	3"SJ
------	----------	----------	----------	----------	------	------

FEMALE SWIVEL GASKETS / Sold per dozen

F850	3/4"	1"	1 1/2"	2 1/2"	3"	4"	4 1/2"	5"
------	------	----	--------	--------	----	----	--------	----

## Swivel Bushing

Chrome-plated brass, double female bushing, internal lug, rocker lug swivel. *Ship. wt. 4 lbs.*



AK061 - Double Female Swivel Bushing

1 1/2" NPT x 1 1/2" NST Swivel

1 1/2" NPT x 2 1/2" NST Swivel

2 1/2" NPT x 2 1/2" NST Swivel

3" NPT x 2 1/2" NST Swivel

AK062 - Double Female Swivel Bushing with Screen Insert

1 1/2" NPT x 2 1/2" NST Swivel

2 1/2" NPT x 2 1/2" NST Swivel

3" NPT x 2 1/2" NST Swivel

## Suction Swivel Adapter

Chrome-plated brass with screen; 2 1/2" NST swivel female x 2 1/2" NPT male. *Ship. wt. 3 lbs.*



W505 Adapter

## Chrome-Plated Brass Bushings

Female NPT by male hose thread bushing with internal lugs. Available with or without screen. *Ship. wt. 4 lbs.*



W504 - Chrome Plated Bushing

1 1/2" NPT F x 1 1/2" NST M

2 1/2" NPT F x 2 1/2" NST M

4" NPT F x 4" NST M

4 1/2" NPT F x 4 1/2" NST M

5" NPT F x 5" NST M

6" NPT F x 6" NST M

AK014 - Chrome Plated Lug Bushing with Screen

2 1/2" NPT F x 2 1/2" NST M

4" NPT F x 4" NST M

4 1/2" NPT F x 4 1/2" NST M

5" NPT F x 5" NST M

6" NPT F x 6" NST M



# Akron Brass – Product Innovator and Worldwide Leader

## Black Max™ Piston Intake Valve

The Black Max™ Piston Intake Valve has been designed for harsh environments of today's fire service. It's superior materials and enlarged waterway allows you to maximize flows and efficiency. *Ship. wt. 32 lbs.*



- ▶ **Improved Corrosion Resistance:** Combines stainless steel piston housing, poly-impregnated body and polymer piston for maximum product life
- ▶ **Field Serviceable:** Unique 2-piece design allows the piston intake valve to be field serviceable
- ▶ **Extended Durability:** Full 10-year warranty against manufacturing defects and corrosion
- ▶ **Full Flow:** 2000 gpm (7600 lpm) - Enlarged waterway for maximum flow efficiency
- ▶ **Low Friction Loss:** Only 7 psi @ 2000 gpm (.5 bar @ 7600 lpm)

AS126	4" Storz x 5" NSTFSW
AS127	4" Storz x 6" NSTFSW
AS128	5" Storz x 5" NSTFSW
AS129	5" Storz x 6" NSTFSW
AS130	6" Storz x 5" NSTFSW
AS131	6" Storz x 6" NSTFSW

## Lightweight Leader Line Wye

Lightweight Leader Line Wye has a 2½" NST swivel female inlet x (2) 1½" NST male outlets. Used to divide (1) 2½" hose into (2) 1½" hose lines. Each 1½" outlet is independently controlled by high strength polymer handles. *Ship. wt. 5 lbs.*



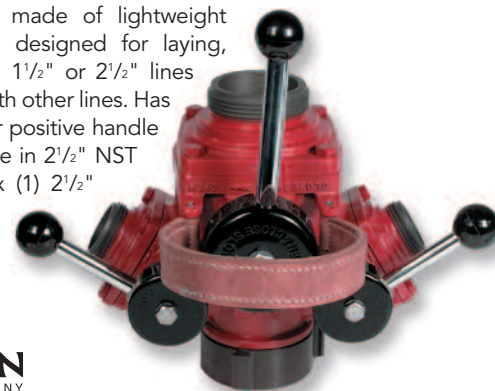
Two 1½" independently controlled outlets



AF787 Lightweight Leader Line Wye

## Water Thief

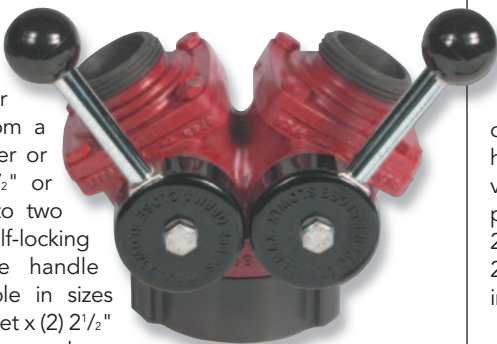
The Water Thief is made of lightweight aluminum alloy and designed for laying, extending or adding 1½" or 2½" lines without interfering with other lines. Has self-locking valves for positive handle positioning. Available in 2½" NST swivel female inlet x (1) 2½" NST valved outlet and (2) 1½" NST male valved outlets. *Ship. wt. 14 lbs.*



AF811 Water Thief

## Hydrant Wye

The Hydrant Wye is made of lightweight aluminum alloy and is used for laying two lines from a hydrant to a pumper or for branching a 2½" or larger supply line to two 2½" lines. Has self-locking valves for positive handle positioning. Available in sizes 2½" to 6" female inlet x (2) 2½" NST male swivel valves outlets. *Ship. wt. 17 lbs.*



AF78801	2½" F x (2) 2½" Male
AF78802	3" F x (2) 2½" Male
AF78804	4" F x (2) 2½" Male
AF78805	4½" F x (2) 2½" Male
AF78806	5" F x (2) 2½" Male
AF78807	6" F x (2) 2½" Male

## Suction Siamese

Made of lightweight aluminum alloy. Used to feed pumper suctions or aerial platforms with one or two, 2½" or 3" hose lines. Has self-locking valves for positive handle positioning. Available in sizes 2½" to 6" female swivel x (2) 2½" NST swivel female valved inlets. *Ship. wt. 19 lbs.*



AF78901	(2) 2½" F x 2½" F
AF78902	(2) 2½" F x 3" F
AF78903	(2) 2½" F x 4" F
AF78904	(2) 2½" F x 4½" F
AF78905	(2) 2½" F x 5" F
AF78906	(2) 2½" F x 6" F

## Hydrant Gate Valve

Lightweight non-rising stem gate valve 2½" NH female swivel x 2½" NH male is excellent for hydrant and other hose line/water control. There is a spinning knob on hand wheel for easy open/close, with a built in slow close safety operation. The gate, spindle, female swivel, male threads, and the body inside and out are all anodized for maximum corrosion resistance. This valve has low friction loss and is maintenance free. The gate valve has a working pressure of 250 psi.

- ▶ Weight: 4.5 lbs.
- ▶ 6"Lx5"Wx9"H



BL337 2½" Hydrant Gate Valve

## Hydrant Valve

- ▶ Lightweight alloy
- ▶ 2½" full flow waterway
- ▶ Adapter easily removed for seat adjustment
- ▶ 2½" female inlet x 2½" male outlet
- ▶ Self-locking handle for positive positioning
- ▶ Ship. wt. 8 lbs.



BK221 2½" Hydrant Valve

## Gated Brass Ball Valve

Female 2½" rocker lug swivel inlet with (2) 1½" male outlets. Operates easily under high pressure. Red body with chrome trim or polished brass. Rugged die-cast handles. NST threads. Ship. wt. 10 lbs.

- ▶ Two way
- ▶ Quarter turn
- ▶ Full flow

AR119 Gated Ball Valve, Polished Brass

## Lightweight Gated Valve

No more heavy brass valves to carry around. Our lightweight line wyes with aluminum construction cut the overall weight by more than 30% when compared to traditional brass valves. Ship. wt. 8 lbs.



BE257 2½" NSTF Inlet x (2) 1½" NSTM Outlet Valve

BE315 2½" NSTF Inlet x (2) 2½" NSTM Outlet Valve

## Forestry Wye

Male adapters are easily removed for adjustments of seats.

- ▶ 1½" female inlet x two 1½" male outlets
- ▶ Ship. wt. 3 lbs.

BK218 1" NSTF x (2) 1" NSTM

BK219 1½" NSTF x (2) 1½" NSTM

BK220 1½" NSTF x (2) 1" NSTM



## Gate Valve

The gate valve is constructed of lightweight Pyrolite® with a heavy-duty wedge gate design, a non-rising stem and a handwheel for easy operation at standard pressures. The handwheel can also be utilized as a carrying handle for easy transport of the valve. The unique design provides minimal friction loss and meets the NFPA slow close requirements. Ship. wt. 9 lbs.



AW161 3" NHF x 3½" NHM

AW163 4" NHF x 4" NHM

AW164 4½" NHF x 5" Storz

AW165 4½" NHF x 4" Storz





# Storz Adapters 2 1/2" through 6"

Locking Storz On All Adapters To Meet NFPA

## Storz to Long Handle Swivel Female

Storz to long handle swivel female adapter. Made of 6061-T6 aluminum alloy, then hardcoated to reduce corrosion and abrasion. *Ship. wt. 3 lbs.*



AG733 / Female

S	2 1/2"	3"	3 1/2"	4"	4 1/2"	5"	6"
4"	•	•	•	•	•	•	•
5"	•	•	•	•	•	•	•

## Storz to Rigid Male

Storz to rigid male adapter. 6061-T6 lightweight aluminum alloy, hardcoated for protection against corrosion and abrasion. *Ship. wt. 3 lbs.*



AG737 / Male

S	2 1/2"	3"	3 1/2"	4"	4 1/2"	5"	6"
4"	•	•	•	•	•	•	•
5"	•	•	•	•	•	•	•

## Storz to Rigid Female

Storz to rigid female adapter. 6061-T6 aluminum alloy, hardcoated to reduce corrosion and abrasion. *Ship. wt. 3 lbs.*



AG735 / Female

S	2 1/2"	3"	3 1/2"	4"	4 1/2"	5"	6"
4"	•	•	•	•	•	•	•
5"	•	•	•	•	•	•	•

## Storz to Swivel Female

Storz to rocker lug swivel female adapter. 6061-T6 aluminum alloy, hardcoated for protection against corrosion and abrasion. *Ship. wt. 3 lbs.*



AG734 / Female

S	2 1/2"	3"	3 1/2"	4"	4 1/2"	5"	6"
4"	•	•	•	•	•	•	•
5"	•	•	•	•	•	•	•

## Storz to Swivel Female Elbow

Storz to female swivel 30° elbow, long handles. Storz head made of 6061-T6 aluminum alloy, elbow made from tough, lightweight AL-MAG 35. Hardcoat anodized to resist abrasion and corrosion. *Ship. wt. 3 lbs.*



AG732 / Female

S	2 1/2"	3"	3 1/2"	4"	4 1/2"	5"	6"
4"	•	•	•	•	•	•	•
5"	•	•	•	•	•	•	•

## Storz to Swivel Female 30° Elbow

Storz to female swivel 30° elbow, rocker lug. Storz heads made of 6061-T6 aluminum alloy, elbow made from tough, lightweight AL-MAG 35. Hardcoat anodized to resist abrasion and corrosion. *Ship. wt. 3 lbs.*



AG731 / Female

S	2 1/2"	3"	3 1/2"	4"	4 1/2"	5"	6"
4"	•	•	•	•	•	•	•
5"	•	•	•	•	•	•	•

## Storz to Storz Adapters

Storz to Storz adapters allow you to connect Storz couplings of different sizes. They are particularly useful in mutual aid evolutions. This adapter can be used in combinations from 1" - 6" Storz. For use on 4" or 5" hose. *Ship. wt. 3 lbs.*



AJ100	5" Storz x 4" Rigid Storz
AJ101	5" Storz x 4" Swivel Storz
AW068	6" Storz x 4" Storz
AW069	6" Storz x 5" Storz

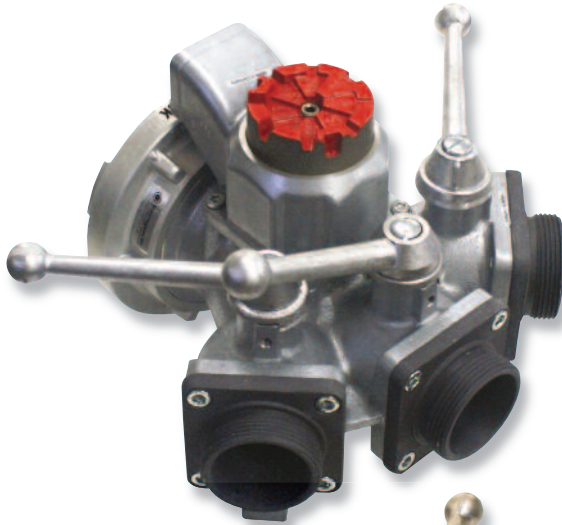
## Storz Blind Caps

Storz blind cap is made of aluminum alloy, hard-coated for resistance to abrasion and corrosion. Comes with standard 18" stainless steel cable. Suction gasket comes standard. *Ship. wt. 3 lbs.*



AG73625	Storz 2 1/2" Blind Cap
AG73630	Storz 3" Blind Cap
AG73640	Storz 4" Blind Cap
AG73650	Storz 5" Blind Cap
AG73660	Storz 6" Blind Cap

# Maximize Your Water Flow with LDH Appliances



## 3-Way Ball Valve

Designed to distribute water to three small diameter lines from a large diameter line, or supply a large diameter line from smaller supply lines. 3-way ball valve features an adjustable pressure relief valve to reduce water hammer. Ball valve body is made of lightweight, high-strength aluminum with powder coat finish. Ball assembly is hard-coat anodized aluminum. Large waterways help minimize pressure loss. **Ship. wt. 21 lbs.**

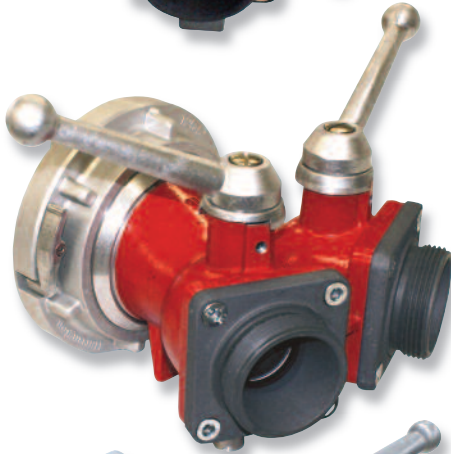
- ▶ Locking storz
- ▶ 3-way ball valve
- ▶ 12 1/4" L x 16" W x 11" H

AS142	4" S x (3) 2 1/2" NSTM
-------	------------------------

AS143	4" S x (3) 2 1/2" NSTF
-------	------------------------

AS144	5" S x (3) 2 1/2" NSTM
-------	------------------------

AS145	5" S x (3) 2 1/2" NSTF
-------	------------------------



## 2-Way Ball Valve

Designed to distribute water to two small diameter lines from a large diameter line, or supply a large diameter line from smaller supply lines. Ball valve body is made of lightweight, high-strength aluminum with red powder coat finish. Ball assembly is hard-coat anodized aluminum. Large waterways help minimize pressure loss. **Ship. wt. 12 lbs.**

- ▶ Locking storz
- ▶ 2-way ball valve
- ▶ 10" L x 9" W x 8" H

AS146	4" S x (2) 2 1/2" NSTM
-------	------------------------

AS147	4" S x (2) 2 1/2" NSTF
-------	------------------------

AS148	5" S x (2) 2 1/2" NSTM
-------	------------------------

AS149	5" S x (2) 2 1/2" NSTF
-------	------------------------



## 3-Way Manifold

This lightweight, compact unit is a simple, economical way to feed multiple small lines with one large line, and continue with a large line. All outlets are valved. Relief valve and pressure gauge are standard. **Ship. wt. 42 lbs.**

- ▶ 17 1/2" L x 21 1/2" W x 13" H

BC006	4" Storz Inlet x 4" Storz Outlet x (2) 2 1/2" NH M
-------	--

BC007	5" Storz Inlet x 5" Storz Outlet x (2) 2 1/2" NH M
-------	--



## Supply Multiple Attack Lines Manifold

Sizes come with 4" or 5" Storz connection on both. Large gated intake and discharge plus (4) 2 1/2" gated discharges. Portable manifold is designed to take advantage of the increased flow capabilities of large diameter hose. Can supply multiple attack lines without a pumper. Brings your hydrant to the fire scene. Fabricated from lightweight, high-strength aluminum alloy and is hard coat anodized. Provided with large full flow waterways, relief valve and a glycerine filled pressure gauge to indicate residual pressure. **Ship. wt. 51 lbs.**

- ▶ Locking storz
- ▶ 5-Way manifold
- ▶ 16" L x 21" W x 13" H

AR142	4" Storz Intake to (4) 2 1/2" NST Male Outlets and (1) 4" Storz Gated Outlet
-------	--

AR143	5" Storz Intake to (4) 2 1/2" NST Male Outlets and (1) 5" Storz Gated Outlet
-------	--



## Gate Valve With 25° Elbow

Lightweight aluminum alloy design includes non-rising stem, elbow, relief valve, air bleeder and 4" through 6" female swivel. For use on pumper intake. *Ship. wt. 29 lbs.*

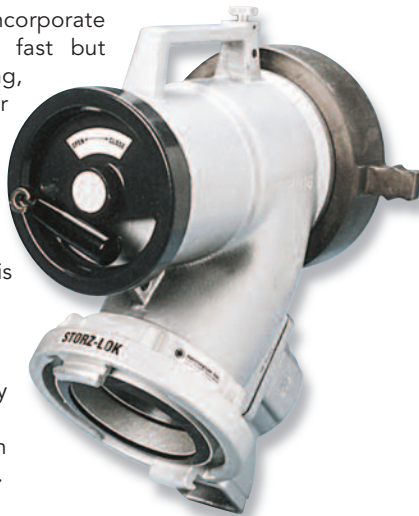
Locking Storz



AR122	4" Storz to 4" NST Female Swivel
AR123	4" Storz to 4½" NST Female Swivel
AR124	4" Storz to 5" NST Female Swivel
AR125	4" Storz to 6" NST Female Swivel
AR126	4" Storz to 4" Storz Female Swivel
AR127	5" Storz to 4" NST Female Swivel
AR128	5" Storz to 4½" NST Female Swivel
AR129	5" Storz to 5" NST Female Swivel
AR130	5" Storz to 6" NST Female Swivel
AR131	5" Storz to 5" Storz Female Swivel

## Stainless Steel Piston Intake Relief Valve

Designed to incorporate quick-connection, fast but controlled opening, with an air bleeder and relief valve. 45° inlet provides smooth water flow for reduced friction loss. This valve is covered by a



- ▶ 10-year warranty against failure due to corrosion
- ▶ *Ship. wt. 27 lbs.*

AW070	4" Inlet Storz x 4½" NH F Outlet
AW071	4" Inlet Storz x 5" NH F Outlet
AW072	4" Inlet Storz x 6" NH F Outlet
AW073	5" Inlet Storz x 4½" NH F Outlet
AW074	5" Inlet Storz x 5" NH F Outlet
AW075	5" Inlet Storz x 6" NH F Outlet

## 2-Way Siamese

These reliable clappered Siamese valves are used for feeding one large line with multiple smaller lines. Clapper valve allows for single line usage. Powder-coat aluminum finish with carrying handle. Other sizes also available. 10½" L x 10" W x 5" H. *Ship. wt. 8 lbs.*



- ▶ Single clapper

AS138	2-Way Siamese 4" Storz x (2) 2½" NST F SW
AS139	2-Way Siamese 4" Storz x (2) 2½" NST M
AS140	2-Way Siamese 5" Storz x (2) 2½" NST F SW
AS141	2-Way Siamese 5" Storz x (2) 2½" NST M

## 3-Way Siamese

Aluminum construction with large waterways. 2½" NST female swivel inlets. Convenient carrying handle. *Ship. wt. 18 lbs.*



AW078	3-Way Siamese 4" S x (3) 2½" NH Inlet
AW079	3-Way Siamese 5" S x (3) 2½" NH Inlet

## Mega Flow XL Aluminum Valve

Our newest compact design for pumper intake control allows easy maintenance. By removing only five bolts, all moving parts can be removed in one assembly. The new design offers the lowest friction loss and largest waterway available. *Ship. wt. 35 lbs.*

- ▶ Low profile 30° integrated elbow
- ▶ Field-adjustable pressure relief valve
- ▶ Full ¾" air bleeder
- ▶ Friction Loss at 1000 GPM: 2.3 psi
- ▶ Extension: 10½" L x 8" W x 17" H



BL633	4" Inlet Storz x 5" NH F Outlet
BL634	4" Inlet Storz x 6" NH F Outlet
BL635	5" Inlet Storz x 4½" NH F Outlet
BL636	5" Inlet Storz x 5" NH F Outlet
BL637	5" Inlet Storz x 6" NH F Outlet