

Darley Flow Test Kit

Accurately Measure Flow in Hydrant Systems & Fire Pumps

Darley offers its own Flow Test Kit with several outstanding design features that make it easier to use than kits offered by others. Precise flow measurement accurately measures flows from 160-1500 gpm within 30-200 psi pitot gauge range. Reliable conversion table-flow results based on standard flow charts and proven with extensive water volume tests. Liquid-filled dial gauge 3 1/2" diameter, Grade A-1% accuracy, 0-200 psi range and vibration free readings. Tester body nozzles and swivel inlet are made of heat-treated aluminum alloy. Parts are hard-coated anodized to provide an extremely durable, protective surface. Automatic coupling design for instant and positive nozzle bore change. Renewable Brass Pitot Blade allows easy, inexpensive pitot blade replacement. Order the complete or economy Darley Flow Test Kit. *Ship. wt. 18 lbs.*

Complete Flow Test Kit

- ▶ Set of Six Nozzle Tips:
1", 1 1/4", 1 1/2", 1 3/4", 2" & 2 1/4"
- ▶ One - 2 1/2" NST Female swivel inlet
- ▶ Complete instructions and flow chart
- ▶ Molded plastic foam padded case

Economy Flow Test Kit

- ▶ Choice of four nozzle tip sizes
- ▶ One - 2 1/2" NST Female swivel inlet
- ▶ Plastic tool box with tool tray



AF328 SPECIFY 4 NOZZLE TIP SIZES: 1", 1 1/4", 1 1/2", 1 3/4", 2" & 2 1/4"

Y899 Darley Flow Test Kit with Carrying Case

Y899L Darley Flow Test Kit with Metric Conversion Kit

AF328 Darley Economy Flow Test Kit

PA663 Replacement Pitot Blade

D232-7 Optional 2 1/2" Nozzle



Darley Portable Test Gauge Kit

The Darley Portable Test Gauge Kit is used in conjunction with annual apparatus pump testing or for checking the accuracy of pump panel gauges. The gauges are 3 1/2" diameter, easy-to-read, and liquid-filled. 0-30" vacuum and 0-300 psi pressure gauge is standard. The Test Gauges are connected directly to the apparatus through the Underwriter's test fittings. All pressure gauges are in large, easy-to-read 5 psi increments. The vacuum gauge is in .5 Hg increments. All gauges have a + 1% full scale accuracy certified by the gauge manufacturer. The flexible high-pressure hose has 1/4" male swivels for fast and easy connection to apparatus test fittings. Standard hose length is 36". The mounting plate is made from 1/4" black PVC foam board. An air/water bleed-off valve is conveniently located so that with a touch of a finger all air is bled from the pressure gauge hose and fittings to ensure accurate pressure gauge readings. *Ship. wt. 9 lbs.*

- ▶ Gauge: 3 1/2" Dial
- ▶ Accuracy: +/- 1% of full scale ANSI B40.1 Grade 1A
- ▶ Hose: Two 36" with pressure bleeder valve on hose for pressure gauge
- ▶ Hose Connections: 1/4" NPT swivel male x 1/4" NPT rigid female
- ▶ Case Fill Fluid: Interlube
- ▶ Mounting Plate: Plastic, double broke for hanging test kit from rails or valve handles
- ▶ Warranty: 3-year manufacturer's warranty on gauges



AW144 Darley Portable Test Gauge Kit



All-Weather Line Gauge

The Line Gauge is used for testing static pressure or flowing pressure in nozzles or hoses. Comes equipped with a 300 lb. glycerine-filled gauge. Body is made of hard-coated aluminum alloy. *Ship. wt. 4 lbs.*

Gauge included



AK059 Line Gauge, 1 1/2"

AK060 Line Gauge, 2 1/2"

Darley Hydrant Test Outfit

Flowing and Static Testing

This is the kit you need for finding the flowing and/or static pressure of water coming from any 2 1/2" opening. We include, as shown here, both the gauge itself and all the hardware you need for clamping it to a 2 1/2" threaded opening. The standard gauge reads to 60 psi but if specified, we can supply a 160 psi gauge at the same price. The other gauge, complete with long handle brass NST cap, will show the static pressure in hydrants and mains. *Standard gauge is 100 psi (200 psi same price).* *Ship. wt. 7 lbs.*



J137 Hydrant Test Gauge Outfit

RICE Portable Hose Tester Series



The RICE Hydro line of portable fire hose testers is the culmination of a design effort incorporating 33 years of experience. Featuring safety and speed to quickly fill and bleed hoses during testing. RICE offers LARGE VOLUME at LOW PRESSURE and LOW VOLUME at HIGH PRESSURE to safely eliminate wild lines. Independently controlled stainless steel ball valves eliminate the expense of purchasing extra caps when all outlets are not being used. All RICE hose testers meet or exceed NFPA standards and are available in gas, electric, or diesel power sources, offering various gpm and psi ratings. All RICE fire hose testers come with a 5-year full product warranty.

Four-Outlet Tester

Offers 3 gpm at 500 psi, powered by a 1 HP 50/60 hertz TEFC motor. Capable of testing to 6" diameter coupled hose, up to 300 feet. Features 4 independently controlled stainless steel ball valves, with 1½" NST male discharges and 2½" NST female inlet swivel. **Ship. wt. 175 lbs.**

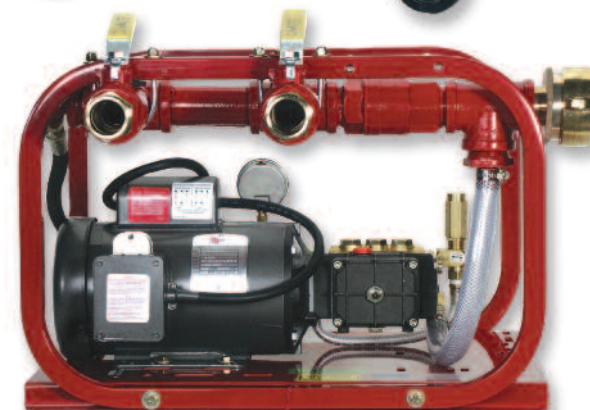
AA930 Four-Outlet Hose Tester



Two-Outlet Tester

Offering the same features as the model AA930, in a portable Two-Outlet unit. With a footprint of 28"x23"x19", this light-weight, compact design is perfect for tight and confined spaces, such as on board ships and vessels. **Ship. wt. 127 lbs.**

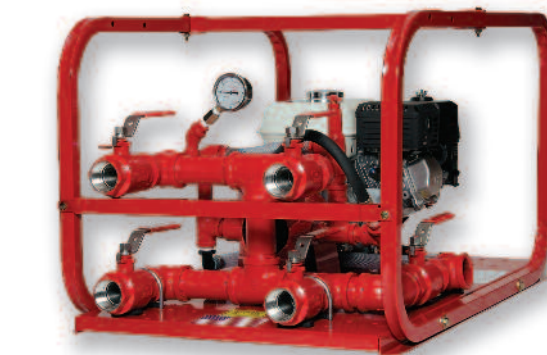
AF416 Two-Outlet Hose Tester



Fire Hose Tester

A full line of hose testers offering various gpm and pressure ratings. Featuring four independently controlled stainless steel ball valves, 1½" NST outlets, 2½" NST swivel inlet, enclosed in a rugged, heavy-duty, welded steel chassis. **Ship. wt. 194 lbs.**

Cat#	Description	GPM	PSI
AW146	5.5 HP Gas B&S	5	1000
AW147	5.5 HP Gas Honda	5	1000
AZ517	3 HP Electric	5	800
AZ518	3 HP Electric	4	1000
AZ519	5.5 HP Gas Honda	3.5	1000
AZ520	5.5 HP Gas B&S	3.5	1000
AZ521	5.5 HP Gas Honda	10	450
AZ522	5.5 HP Gas B&S	10	450



Line Cage

- ▶ Heavy gauge welded steel frame, powder coated
- ▶ Locking hitchpins enclose and secure hose to Line Cage
- ▶ Safely limits the mobility of line when rupture occurs
- ▶ Multiple locking holes to accommodate various hose sizes
- ▶ Stops a burst or ruptured line from retracting beyond the location of the tool
- ▶ Meets NFPA 1962.7.6.26 requirements: "Securing and Anchoring" fire hose while being tested

BE079 Line Cage



Fire Hose Wand Accessory

A Year-Round Contributor

Unlike other pressure washers, the AA931 Pressure Wand accessory offers a maximum of 500 psi to give cleaning power with less risk of damage to decals or paint. The dual tipped wand allows users to select soap, water, or both. Maximum cleaning range allowed with 50 foot quick coupled high pressure hose. *Ship. wt. 20 lbs.*



AA931 Fire Hose Wand Accessory

Hose Tester Accessories



AC7281525	1 1/2" Rigid RL F x 2 1/2" M
AG7355025	5" S x 2 1/2" Rigid F
BK072	1 1/2" Cap with Chain and Petcock
BK073	2 1/2" Cap with Chain and Petcock
BK074	5" Storz Cap with Chain and Petcock

Hydrostatic Test Pump

The DPH-3B is the most preferred hydrostatic test pump on the market today. A large-volume, medium-pressure test pump, recommended for testing up to 36" lines. The 11gpm 550 psi diaphragm pump allows the handling of up to 10% chlorine solution and has the ability to be run dry without damage to the pump. *Ship. wt. 114 lbs.*

- ▶ Automatic Pressure Regulator
- ▶ Heavy-duty welded steel frame and base
- ▶ Liquid-filled gauge, ensures accurate readings
- ▶ Inlet 9' suction hose with strainer
- ▶ High pressure outlet hose with quick couplers



AS364 Hydrostatic Test Pump

Watertight Products Protector™ Cases

BD129:

- ▶ Fold down overmolded handle
- ▶ Weight with Foam: 5 lbs.

BD130:

- ▶ Fold down overmolded handle
- ▶ Transport wheels
- ▶ Weight with Foam: 20 lbs.

BD131:

- ▶ Fold down and retractable handle
- ▶ 2" transport wheels
- ▶ Weight with Foam: 26 lbs.

BD132:

- ▶ Fold down main handle
- ▶ Retractable handle
- ▶ Seven large latches
- ▶ New super heavy-duty quad wheels
- ▶ 2" transport wheels
- ▶ Weight with Foam: 33 lbs.

BD133:

- ▶ Two-person lift handles
- ▶ Retractable handle
- ▶ New super heavy-duty quad wheels
- ▶ 2" transport wheels
- ▶ Weight with Foam: 42 lbs.

ALL CASES: Black only

Cat#	Exterior Dimension	Interior Dimensions
BD129	13.4"Lx11.6"Wx6"D	11.8"Lx18.9"Wx5.2"D
BD130	22.1"Lx17.9"Wx10.4"D	20.4"Lx15.4"Wx9"D
BD131	24.8"Lx19.4"Wx13.9"D	21.4"Lx16.3"Wx12.6"D
BD132	30.7"Lx20.5"Wx11.6"D	28.5"Lx17.4"Wx10.5"D
BD133	31.5"Lx22.9"Wx19"D	28.2"Lx19.7"Wx17.6"D



Lightweight Pump

Powered by Honda's easy-starting, 31cc mini 4-stroke engine, this lightweight pump weighs only 15 lbs. and can pump up to 40 gpm. *Ship. wt. 17 lbs.*

- ▶ Engine: Honda 4-stroke, single-cylinder, air-cooled engine, GX31, 1.5 hp, OHV
- ▶ Displacement: 31cc
- ▶ Bore and Stroke: 1.5x1.0"
- ▶ Compression Ratio: 8:0:1
- ▶ Pump Type: General purpose, centrifugal, self-priming
- ▶ Priming Time: 120 sec @ 16.4"
- ▶ Drive System: Direct
- ▶ Discharge Capacity: 40 gal/min
- ▶ Suction Port Diameter: 1" NPT
- ▶ Discharge Port Diameter: 1" NPT
- ▶ Total Head Lift: 100'
- ▶ Suction Head Lift: 23'
- ▶ Maximum Pressure: 43 psi
- ▶ Dimensions: 13.0"x9.8"x12.8"
- ▶ Dry Weight: 15 lbs.

BB040 Lightweight Pump

General Purpose Pump

- ▶ Performance: Delivers a maximum discharge capacity of 275 gpm, maximum head of 85'
- ▶ Engine: Honda 4-stroke, single-cylinder, air-cooled engine, GX160, 5.5 hp, OHV
- ▶ Displacement: 163cc
- ▶ Bore and Stroke: 2.7"x1.8"
- ▶ Compression Ratio: 8:5:1
- ▶ Oil Alert®: Standard
- ▶ Pump Type: Centrifugal, self-priming
- ▶ Volute: Rigid-mounted cast iron
- ▶ Impeller: Cast iron
- ▶ Mechanical Seal: Silicon carbide
- ▶ Priming Time: 150 sec @ 16.4"
- ▶ Drive System: Direct
- ▶ Discharge Capacity: 275 gal/min
- ▶ Suction Port Diameter: 3" NPT
- ▶ Discharge Port Diameter: 3" NPT
- ▶ Total Head Lift: 85'
- ▶ Suction Head Lift: 26'
- ▶ Maximum Pressure: 37 psi
- ▶ Solids Handling: $\frac{5}{16}$ "
- ▶ Dimensions: 20.1"x15.2"x17.9"
- ▶ Dry Weight: 60 lbs.

BB041 General Purpose Pump

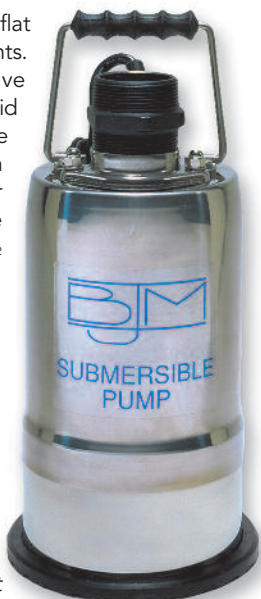
BH008 Hose Kit *

*Hose Kit Includes: 20 ft. suction hose, soft discharge hose, strainer

"Mop-up" Dewatering Pump

If You Need to Move 1,000 Gallons of Water Fast, We've Got the Pump for You!

The "Mop-up" Pump is perfect for flat roofs, flooded garages and basements. Features a unique non-return valve built-in just below the impeller. Liquid will stay in the pump and pump-line after shutdown and not release out on the floor. The pump bottom is rubber clad to protect against damage to the floor surface. It will pump down to $\frac{1}{12}$ of an inch, and start up in only a small puddle of liquid. Water cleanup after a fire is made easy with the "Mop-up" Pump. All pumps are equipped with thermal overload protection against overheating and delivered standard with 2" NPT connection. A Superior motor, with protection for longer life, less maintenance and less down-time! *Note: If the pump is to be used as a portable unit, it is strongly advised to add a "Ground Fault Interrupter" to the power supply line.* *Ship. wt. 27 lbs.*



AF412 "Mop-up" Dewatering Pump

DON'T MISS

More pumps like this on pages (p220-228)



WATER SUPPLIES



Honda Trash Pump

- ▶ Heavy-duty 3" construction trash pump
- ▶ Easy-starting Honda 8hp OHV commercial engine
- ▶ Full frame protection
- ▶ 319 gal./min. capacity
- ▶ Solid handling capability up to $1\frac{1}{16}$ "
- ▶ Easy-to-use quick clean out port
- ▶ Easy-to-service impeller wear plate
- ▶ Protected by Honda Oil Alert®



BG155 Honda Trash Pump

BH008 Hose Kit *

*Hose Kit Includes: 20 ft. suction hose, soft discharge hose, strainer

Self Leveling Floating Strainers

- ▶ Increased flow rates due to high intake ratio
- ▶ Maximum pump flows
- ▶ Light weight design
- ▶ New compact design for easy storage
- ▶ Handle for ease of carrying
- ▶ Vortex Shield protects against whirlpooling
- ▶ Full time swiveling strainer
- ▶ Most efficient strainers on the market



BK012

BK012	1 1/2" Self Leveling Floating Strainer
BK013	2 1/2" Self Leveling Floating Strainer
BK014	3" Self Leveling Floating Strainer
BK015	4" Self Leveling Floating Strainer
BK016	4 1/2" Self Leveling Floating Strainer
BK017	5" Self Leveling Floating Strainer
BK018	6" Self Leveling Floating Strainer *

* Recommended for pumps 1250 to 1500 gpm.

Low Level Strainer with Jet Siphon

This compact unit can be used as both a water transfer device as well as a low level strainer. Features lightweight 6061-T6 aluminum construction with red powder coat finish for long life. Will draft in as little as 3" of water without whirlpooling. Pivoting neck enables base to stay flat on the tank bottom. Comes standard with internal screen (all sizes) and jet siphon (4"-6"). Call for pricing on optional Cam Lock or Storz fittings. *Ship. wt. 25 lbs.*

2 1/2" AND 3" ARE NOT MANUFACTURED WITH A JET SIPHON
CALL FOR PRICING ON STORZ AND CAM LOCK FITTINGS.

AS227	2 1/2"	3"	4"	4 1/2"	5"	6"
-------	--------	----	----	--------	----	----

Power Jet Siphon

Ideal for departments that rely on portable tanks for water supply. Maximizes the flow of water through the suction hose using a venturi action. Made of lightweight, long-lasting aluminum construction. 1 1/2" female assist x 2 1/2" thru 6" discharge. *Ship. wt. 25 lbs.*

AS228	2 1/2"	4"	4 1/2"	5"	6"
-------	--------	----	--------	----	----

Bottom Guard Barrel Strainer

The new innovative "Bottom Guard Strainer" was designed to work with gravity. As the strainer moves toward the water's bottom, the *guard* swivels to the underside of the barrel strainer providing a clean, stable platform from which to draft.

- ▶ Rugged, lightweight and compact
- ▶ Continual swivel "bottom guard" prevents the collection of debris from bottom
- ▶ Ideal for use in silt, rocky or weeded conditions
- ▶ Aluminum construction with wrinkle black powder coated finish on bottom guard



Back View

BK235	2.5" NH Bottom Guard Barrel Strainer
BK236	3" NH Bottom Guard Barrel Strainer
BK237	4" NH Bottom Guard Barrel Strainer
BK238	4.5" NH Bottom Guard Barrel Strainer
BK239	5" NH Bottom Guard Barrel Strainer
BK240	6" NH Bottom Guard Barrel Strainer



DON'T MISS

More products like this
in Hose (p31-40)



Supply Line Holder

Secures hose quickly and minimizes turbulence. 2½" and 3" hose sizes. Frees up personnel for other duties. **Ship. wt. 18 lbs.**

Y211	Supply Line Holder, 2½"
Y212	Supply Line Holder, 3"



Self-Supporting Frameless Portable Water Tank

These self-supporting frameless water tanks have been designed to meet the most stringent requirements of rural/urban fire fighting. Problems with inadequate or unusable supplies of water are eliminated by the use of open top self-supporting portable water tanks. In remote areas, the self-supporting tanks are designed for standby water containment, water shuttling situations and to provide a continuous portable water supply. In remote areas, the SST may be filled by pumping water from a natural water source, such as a stream or creek, with a small gas-operated pump. As the self-supporting tank begins to fill with water, its unique design allows it to become self supporting automatically. The SST can be used as a mixing tank as well as a temporary holding in hazardous waste situations. It may be quickly drained through a threaded flange fitting on the side. The tank is totally collapsible and easily stored in its own compact storage bag. *Made of heavy-duty industrial PVC.*



Easy 1-person setup

- ▶ No frame, assembly, foot pump, auxiliary air or need to inflate
- ▶ Use as mixing tank, water relay, water storage
- ▶ Use for fire fighting, hazardous waste, etc



SPECIFY NST or IPT, male or female threaded flange coupling, installed. SPECIFY SIZE CHOICE of threaded drain flange coupling, 1½"-5" available. 6" additional cost. SPECIFY COLOR: Yellow, Red or Orange.

Cat#	Gallon	Size Open	Ship.wt.
AJ182	500	2'8"x5'0"x6'6"	50 lbs.
AJ183	1000	2'8"x7'3"x8'10"	55 lbs.
AJ184	1500	2'8"x9'2"x11'10"	60 lbs.
AJ185	2000	2'8"x10'x12'5"	65 lbs.
AJ186	2500	2'8"x12'x13'6"	70 lbs.
AJ187	3000	2'8"x13'x14'9"	75 lbs.
AJ188	4000	2'8"x14'x16'	90 lbs.
AJ189	5000	2'8"x17'x19'	100 lbs.

BC001 6" Flange Coupling

Portable Collapsible Fol-Da-Tank

The First and Still the Best

It was more than 50 years ago that the first Fol-Da-Tank was introduced to firefighters, who recognized its value and quality immediately. Fol-Da-Tank Co. has been continually improving frame and fabric designs to help provide the most reliable portable water tank in the industry. Fol-Da-Tank has proved to be the practical answer as an extra water supply for rural areas, where water pressure is low or as a back-up facility for municipal fire departments. It's available in nine standard sizes. Fol-Da-Tank doubles the fire fighting ability of a tanker truck at an affordable price. Two firefighters can unload from the truck and set up in 30 seconds. While pumper empties the Fol-Da-Tank, a tanker can be supplying more water. With the fire out, Fol-Da-Tank can be emptied quickly with the exclusive 10" diameter drain sleeve. You can store the drain sleeve inside or outside of the tank.

- ▶ Liners: Hypalon, FDA
- ▶ Frames: Steel, resistance welded 14-gauge 7/8" round steel tubing with snag-free finish
- ▶ Hinges: Die-cut
- ▶ Grommets: Solid brass
- ▶ Bolts: Heavy-duty



AVAILABLE GALLONS:
600, 1000, 1500, 2100, 2500, 3000, 4000
SPECIFY COLOR: Hypalon - Red or Yellow

Fol-Da-Tank Steel Frame	
Cat#	Description
BL234	17oz. HPR
BL235	22oz. HPR
Liners	
BL236	17oz. HPR
BL237	22oz. HPR

Snaptank™

Snaptank™ is the space saving, easy-to deploy alternative to traditional rigid framed relay tanks. Realize all the advantages of a rigid framed relay/dump tank with the mobility and compact packaging of an unsupported freestanding tank. No spill over, no rolling. Nothing in the industry offers more structural integrity on flat or uneven ground than the Snaptank™. Constructed of the finest aircraft quality aluminum components, Snaptank™ is light yet durable and can be fully functional in minutes. Five models offer capacities from 1000-3000 gallon, each plumbed with a standard 3" threaded flange with plug and packaged in a compact field bag.



AVAILABLE GALLONS: 1000, 1500, 2000, 2500, 3000

AZ372	Snaptank™ with 22 oz. Liner
AZ373	Ground Covers
AZ374	Replacement Field Bags
AZ375	Replacement Liner 22 oz. Vinyl with Flange and Cap



Float-Dock® Strainer

Pump Pond Water Free of Debris

The Float-Dock® strainer is a valuable piece of equipment that can save the day in many fire fighting situations. Float-Dock® lets you use the water in ponds or streams, both shallow and deep. Because it operates below scum and debris and above sand and muck, it screens out the materials that wear out impellers, packing and bearings. Since Float-Dock® strainers are self-leveling, there are no whirlpools or suction loss. It will draft in as little as 5" of pond water at pump's rated capacity. In deep water, Float Dock drafts clean water below the surface. Each unit is fully guaranteed.



Cat#	Strainer	Float	Coupling
H224	4"x6"x14"	5"x15"x18½"	2½"
H22401	4"x6"x14"	5"x15"x18½"	3"
H225	7"x10"x18½"	7"x21"x26½"	4"
H22502	6"x8"x18½"	7"x21½"x26½"	4½"
H22603	6"x8"x18½"	7"x21½"x26½"	5"
T134	7"x16"x18½"	7"x21½"x26½"	6"

Carrying Rack

Float-Dock® strainers fit snugly in this lightweight carrying rack with rubber bumpers and live rubber strap to hold the unit securely in place. Mounts either on running board or inside a compartment.

T135	Carrying Rack, for 2½" & 3"
T136	Carrying Rack, for 4", 4½" & 5"

Low-Flow Strainer

Strainer will perform at maximum pumping capacity down to a water level of just 1½" with no suction loss. Surface turbulence will not affect this strainer. Can be easily stored in truck compartment. Sizes 4" thru 6" come with 1½" cast aluminum jet siphon. Ship. wt. 24 lbs.



X892	Low-Flow Strainer, 2½"
X893	Low-Flow Strainer, 3"
X894	Low-Flow Strainer, 4"
X895	Low-Flow Strainer, 4½"
X896	Low-Flow Strainer, 5"
X897	Low-Flow Strainer, 6"