

Strobe Beacons



Firebolt Plus

For dependable warning at an affordable price, count on the Firebolt line of strobe beacons. All models feature modular construction for easy installation and maintenance. Power supplies are moisture and vibration resistant, and will automatically adjust to function at multi-voltages. Firebolt Plus is available in a 2-joule (single flash) version and features a replaceable flash tube. The modular construction allows the flash tube to be easily replaced without the use of tools. **Ship. wt. 1 lb.**

- ▶ Polycarbonate base available in permanent and magnetic models
- ▶ Flash Rate: 60 ± 5
- ▶ Voltage: 12-72VDC
- ▶ AMP Draw: 0.24 @ 12V



SPECIFY COLOR: Amber, Blue or Red

AW491 Firebolt Plus Strobe Beacon/Permanent Mount

AW492 Firebolt Plus Strobe Beacon/Magnetic Mount

LED Pulsator®

The industries most popular strobe platform is now LED. Federal Signal's LED Pulsator® features zero maintenance lighting with our innovative LEDNode™ technology. The high-profile LED beacon combines a powerful, solid-state light source and encapsulated digital circuitry with advanced dome optics to produce a bold, high intensity flash. The impact resistant, polycarbonate base and potted construction provide superior performance in extreme shock and vibration. LED Pulsator® beacons are backed by a 5-year warranty.

- ▶ Ten selectable "strobing" flash patterns
- ▶ Multi-voltage, 12-24 VDC; maximum of 0.80-amps, 0.35-amps average.



SPECIFY LED COLOR: Amber or Red

BL049 Pulsator® LED Color Dome Beacon

360° LED Beacon with a Twist

- ▶ 18 watt LEDs, 10 selectable flash patterns
- ▶ Synchronizing capabilities with same series LED light
- ▶ Extremely low current draw
- ▶ Durable polycarbonate, twist-off lens
- ▶ Universal flange base
- ▶ Completely encapsulated circuit for increased weather and shock resistance
- ▶ Amber Lens with Amber LED array
- ▶ Voltage: 10v-30v DC
- ▶ Amp Draw: 0.6 amps @ 12v DC, 0.3 amps @ 24V DC
- ▶ Dimensions: BH179: 4³/₄" Hx6¹³/₃₂" D
BH180: 6¹¹/₁₆" Hx6¹³/₃₂" D



BH179 360° LED Beacon with Twist-Off Short Lens

BH180 360° LED Beacon with Twist-Off Tall Lens

Sentry® Warning Beacon

Federal Signal's Sentry® beacon is a reliable, effective warning light in an attractive, compact package. The large parabolic reflector and brilliant 55-watt halogen bulb combine to produce an intense 80,000 candelas per flash. This beacon is available in 12 or 24 volts and offers excellent 360° warning coverage with 95 flashes per minute rotators. Made of non-corrosive, high-impact polycarbonate, which provide extended service life. It has a twist-off dome, and all major components are field replaceable without the use of tools. Meets NFPA 1901. **Ship. wt. 2 lbs.**



SPECIFY COLOR: Red or Amber

AW229 Sentry® Warning Beacon, Magnetic Mount

AW230 Sentry® Warning Beacon, Permanent Mount

Rotating Beacon

- ▶ Open parabolic design reflector
- ▶ Standard or fast speed
- ▶ 24 volt option
- ▶ 50 watt
- ▶ Permanent mount
- ▶ Meets NFPA specifications when properly configured
- ▶ **Ship. wt. 2 lbs.**



SPECIFY DOME COLOR

AK158 Rotating Beacon

The Darley® Tear Drop

This aerodynamic light is the ideal choice for unmarked cars or the volunteer. Excellent workmanship and the quiet, dependable operation of the unit make it a very special value. The gear drive rotates the highly polished reflector to produce approximately 90 flashes per minute from the 50 CP bulb (available in standard or halogen bulb). Magnetic base has 51 lbs. pull. Exclusive on this light is a slotted bracket for semi-permanent mounting. Comes complete with 10' cigarette lighter plug-in cord. Measures: 4⁵/₈" H x 5³/₈" W x 6³/₄" L. Ship. wt. 3 lbs.

- ▶ Magnetic base



Amber Blue Red Clear

SPECIFY DOME COLOR

T625	Darley® Tear Drop
U191	Darley® Tear Drop with Halogen Bulb

Hotshot II Emergency Light

- ▶ Most compact portable emergency dash light
- ▶ Gear drive rotates the reflector at 90 flashes per minute
- ▶ Comes with vinyl shield and 60 lb. magnet mounting plate
- ▶ 4.13" Diameter, 4" Height
- ▶ Amp Draw: 4 amps
- ▶ 50-watt halogen bulb combined with a highly polished optional reflector gives this light a high intensity flash
- ▶ Made in the USA
- ▶ Ship. wt. 3 lbs.



Amber Blue Red Clear Green

SPECIFY DOME COLOR

BA004	Hotshot II Emergency Light
AJ120	Reflector

Darley Low Profile Dash Light

Its low profile design allows it to fit under sloping windshields with minimum obstruction and maximum visibility for those that need to see it. Features a wide-angle reflector for longer flash duration and brighter impulse from its 50-watt halogen light. 90 flashes per minute. Measures: 7¹/₈" D x 3¹/₂" H. Ship. wt. 3 lbs.



Amber Blue Red Clear

SPECIFY DOME COLOR

U949	Darley® Low Profile Dash Light
AJ121	Suction Mount Dash Bracket
Y832	Universal Tri-Flector

SLR Beacon

The new SLR beacon combines traditional rotating technology and LEDs in one package to bring a one-of-a-kind solution to the market. Built to meet the demands of the tough work environments you face - the SLR beacon is the driving force of rotating LED technology.

- ▶ Federal Signal's patented SOLARIS® reflector optic technology
- ▶ Superior light output from 12 LEDs for maximum work zone visibility
- ▶ Half the amp draw of a traditional 12 VDC halogen rotating beacon
- ▶ Fully-potted for extended product durability



FEDERAL SIGNAL CORPORATION
Emergency Products

Red Amber

SOLARIS

SPECIFY COLOR

BL152	SLR Beacon
-------	------------

Arch™ LED Beacon

- ▶ Brightest LED beacon on the market
- ▶ Provides 360° coverage (except in Half Beacon Model)
- ▶ 36 LED (full) or 18 LED (half) versions
- ▶ Full versions come in solid, multicolor (dual color) or steady burn white LEDs
- ▶ Economical Half Beacon Model is designed for half solid flashing and half with no light protecting driver's from flashback
- ▶ Multiple flash patterns include NFPA approved patterns w/synchronous capability
- ▶ 13 multi-color flash patterns
- ▶ Permanent mount standard
- ▶ 12 volt, reverse polarity protected
- ▶ 6 amps max with 3 amps average
- ▶ 5-year warranty on LEDs
- ▶ Dimming and failure mode features

CODE 3
PUBLIC SAFETY EQUIPMENT, INC.

Red
Blue
Amber

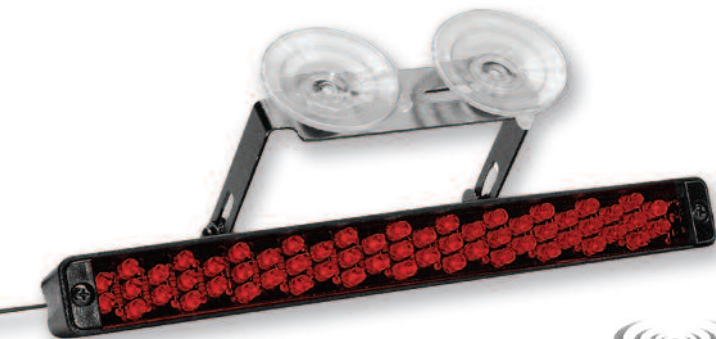
SPECIFY COLOR: Red, Blue or Amber

BL480	Arch™ 36-LED Beacon
BL481	Arch™ 18-LED Beacon Colored Lens & LEDs (1/2 LEDs & 1/2 Empty)

new



Star Mini-Phantom™



- ▶ Perfect for undercover or unmarked vehicle applications
- ▶ Low profile - less than 1" high and lightweight
- ▶ Dash, deck, mirror, or suction cup mount
- ▶ 57 long-life LEDs
- ▶ 3 custom selectable flash patterns via push button switch
- ▶ For interior applications only
- ▶ ULB9: Cigarette plug adapter with lighted on/off switch
- ▶ Includes mounting hardware and instructions
- ▶ Dimensions: 9"Lx1³/₈"W
- ▶ Ship. wt. 1 lb.

Amber Blue Red White

SPECIFY COLOR: Amber, Blue, Red, White

BC106 Star Mini-Phantom™

LED X™ Dual Stack Exterior Light



- ▶ Sealed and waterproof
- ▶ Housing available in black or silver finish
- ▶ Rust-proof, diecast aluminum housing
- ▶ 7 flash patterns including Steady-Burn
- ▶ No color until illuminated
- ▶ 1/2 amp per module
- ▶ Multiple mounting capabilities
- ▶ Excellent perimeter light for vehicles
- ▶ Dimensions: 5"Lx3¹/₄"Wx1"H
- ▶ Stacked Dual Head LED X™
- ▶ Exterior light - flashing
- ▶ 5-year warranty



SPECIFY DIRECTIONAL, Wide, or Vertical Optics

SPECIFY COLOR: Red/Red, Red/Blue, Red/Amber or Red/White

BA138 LED X™ Dual Stack Exterior Light

Slimlighter™ Lights

The Latest in Ultra Bright LED Dash, Deck, and Windshield Lighting

- ▶ Long life. LED's are rated for 100,000 hrs. of operation because they have no glass or filaments to break
- ▶ Low current consumption
- ▶ Highly effective wide angle and straight on light output
- ▶ Perfect size for windshield, dash, deck, or headliner
- ▶ Clear outer lens, optional color lenses
- ▶ 21 selectable ScanLock™ flash patterns
- ▶ Super-LED™ features built-in On/Off switch, 21 selection pattern switch and 8' cord with cigar plug
- ▶ Swivel bracket for permanent or suction cup mounting
- ▶ Optional bail bracket
- ▶ 5-year Heavy Duty Professional warranty
- ▶ Dimensions: 1⁵/₈"Hx16³/₈"Wx1¹³/₁₆"D
- ▶ Lightweight polycarbonate housing with rounded corners is safer for use inside of the vehicle in the event of an accident or airbag activation



WHELEN

SPECIFY COLOR: Red/Red, Red/Blue, or Blue/Blue

AZ178 Slimlighter™ Super-LED Series

AZ179 Bail Mounting Bracket

WARRIOR™ Torus™ Windshield Mounted Deck Lights

- ▶ Torus™ LED technology supercedes Optix providing superior light output
- ▶ Compact size takes less space on the dash or deck
- ▶ Unique design prevents light signal from flashing into driver's eyes
- ▶ Reverse polarity protection feature
- ▶ 9' lighter plug power cord
- ▶ 5 user selectable flash patterns on 3-up models
- ▶ Flash pattern memory
- ▶ Less than 0.2 amp draw
- ▶ Suction cup or L-Bracket Mounting
- ▶ 5-year warranty on LEDs



Amber Blue Red White



SPECIFY COLOR: Amber, Blue, Red, White

BE055 Warrior™ Torus™ Windshield Mounted Deck Lights

Visor LED Flip Light

- ▶ 26 flash patterns
- ▶ Less than 0.5 amp per module
- ▶ Colored or clear outer lenses
- ▶ 9' lighter plug with on/off switch
- ▶ Mounts with two Velcro® Straps
- ▶ Dimensions: 5 $\frac{3}{8}$ "Hx11"Wx1"D
- ▶ Weight: 1.4 lbs.
- ▶ 5 year warranty
- ▶ Meets all applicable SAE and California title 13 specifications when properly configured

High functioning,
low cost undercover
emergency visor light



SPECIFY COLOR: Red/Blue or Blue/Blue

BK111	Visor LED Flip Light Clear Lens with Colored LEDs
BK112	Visor LED Flip Light Colored Lens with Colored LEDs

STARBURST™ DLX3 Series LED Auxiliary Light

- ▶ Small and weather-resistant
- ▶ Intense STAR generation-3 LEDs have current limit protection over entire operating voltage and reverse polarity protection
- ▶ Can be synchronized with other STARBURST™ DLX3s
- ▶ High/low power select and 11 different selectable flash patterns
- ▶ Ships complete with five 3' attached wires, gasket and instructions
- ▶ Dimensions: 1 $\frac{7}{16}$ "Hx4"Wx1 $\frac{7}{8}$ "D
- ▶ Voltage: 10v - 16v DC
- ▶ Ship. wt. 1 lb.



Amber Blue Red White

SPECIFY COLOR: Amber, Red, Blue, or White

BE048	STARBURST™ DLX3 Series LED Auxiliary Light
-------	--

MOUNTING BRACKETS

BE049	Deck Mounting Bracket
BE050	Truck Mounting Bracket
BE051	Universal Mounting Bracket
BE052	Rear License Plate Mounting Bracket

Viper™ S2 with SOLARIS® Reflector Technology

- ▶ Bright/advanced SOLARIS® reflector technology with outstanding off-axis light output
- ▶ Cigarette plug or 2-phase (unique) synchronization
- ▶ Functional push button pattern and synchronization control
- ▶ 23 new and innovative warning flash patterns
- ▶ Versatile mounting bracket with Snap-On flash guard included



Amber Blue Red



SPECIFY COLOR FOR SINGLE AND COMBO FOR DUAL: Amber, Red, or Blue

BD200	Single Head Viper™ S2 w/Cigarette Plug
BD201	Single Head Viper™ S2 w/Phase/Synchronized Wire
BH073	Dual Head Viper™ S2 w/Cigarette Plug
BH074	Dual Head Viper™ S2 w/Phase/Synchronized Wire



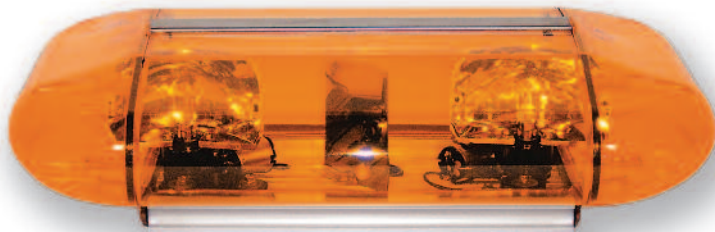
Compact LED Dash Light

LED technology produces an ultra-bright light using less energy and creating less heat than halogen and strobe dash lights. Features 80 high-intensity LEDs to produce a far-reaching light that won't wash out in bright sunlight. Flashes in seven different patterns including variable speed and random flash. On/off and pattern selection switches are conveniently mounted on the housing. Measures only 1 $\frac{1}{2}$ "Hx 6 $\frac{1}{2}$ "L x 1 $\frac{13}{16}$ "D. Comes with a fused cigarette light plug, 10' power cord and mounting bracket. **Ship. wt. 5 lbs.**

AR211	Compact LED Dash Light, Red
AR212	Compact LED Dash Light, Amber
AR213	Compact LED Dash Light, Blue
AR214	Compact LED Dash Light, Blue/Red

Impulse Mini-Bar

The Impulse Mini-Bar is aerodynamic, low profile and available in 20" and 24" lengths. Features polycarbonate Lexan lenses and a fully RF suppressed motor that rotates halogen bulbs at 160 rotations per minute. 24" mini-lightbar offers two inserts to the front and two inserts to the rear for multiple lens coloration. Available in your choice of configuration and comes complete with permanent mount. *Ship. wt. 7 lbs.*



SPECIFY LENS COLOR

Cat#	Description	Size	Configuration
AF488	Impulse Mini-Bar	20"	2 Rotators, 1 Mirror
AF489	Impulse Mini-Bar	20"	3 Rotators
AC883	Impulse Mini-Bar	24"	2 Rotators, 1 Mirror
AC884	Impulse Mini-Bar	24"	3 Rotators



Split LED



SPECIFY LED COLOR: Red, Blue, or Amber

BG282	HighLighter™ LED with Cigarette Plug & Suction Cup Mount (Colored Lens)
BG283	HighLighter™ LED with Cigarette Plug & Suction Cup Mount (Clear Lens)
BG284	HighLighter™ LED with Sync Wire and Permanent Mount (Colored Lens)
BG285	HighLighter™ LED with Sync Wire and Permanent Mount (Clear Lens)

SPLIT LED, SPECIFY COLOR COMBINATION: Red, Blue, or Amber

BG566	HighLighter™ LED with Cigarette Plug & Suction Cup Mount (Clear Lens)
BG567	HighLighter™ LED with Sync Wire and Permanent Mount (Clear Lens)

Quadrant™ Mini Bar

- ▶ 4 Torus™ style optic LED lightheades which provide outstanding signal strength and light spread
- ▶ 4 LEDs per light module
- ▶ Polycarbonate lenses and base
- ▶ Magnetic/suction cup mount and permanent mount standard
- ▶ Magnets spring loaded to allow mini bar to conform to uneven mounting surfaces
- ▶ Includes 9' straight cord and plug-in lighter cord with flash pattern selection switch built in
- ▶ 19 selectable flash patterns to choose from
- ▶ **Dimensions:** 11"Lx2.4"H (without mounting feet)
7.3"Dx3.1"H (with mounting feet)

new



SPECIFY LENS COLOR: Red, Blue, Amber or Clear with Amber LEDs

BL477 Quadrant™ Mini Bar

HighLighter™ LED Mini-Lightbar

The HighLighter™ LED mini-lightbar is a low profile, modular design of the industry leading HighLighter™ mini-lightbar. The HighLighter™ LED combines the high-performance ROC (Reliable Onboard Circuitry™) with the high-efficiency Solaris® reflector design. This innovative concept offers uniform 360° light distribution, which means no dark spots or shadows.

- ▶ Incorporates ROC™ LED technology
- ▶ Magna Select™ allows the user to easily switch flash patterns using a magnet (patent pending)
- ▶ More than twenty user-selectable flash patterns
- ▶ Synchronize or alternately flash with multiple HighLighter™ LED units or a variety of other LED light heads
- ▶ Perfect in areas with "No Idle" policies



Magna Select™

LED Mini Light Bar

- ▶ High profile warning signal provides 360° visibility
- ▶ 2 levels of unique LED reflectors in each beacon provide a focused signal for superior brightness
- ▶ Low amp draw and bright output provide the ideal beacon for everyday use
- ▶ Lighter plug and mounting options provide versatility for different applications
- ▶ 2 synchronous LSS222 LED beacons under one lens
- ▶ 2 levels of 8 LEDs in each beacon
- ▶ 39 built-in user selectable flash patterns, including 4 simulated rotating patterns



- ▶ Dimensions: 16.5" Lx5.25" Hx8"W
- ▶ 5 year warranty
- ▶ Meets SAE J845, Class 1

SPECIFY COLOR: Blue, Red, Red/Blue or Amber LEDs for BK105 & BK107 & BK109
 SPECIFY COLOR: Blue, Red or Amber Lens/LEDs for BK106 & BK108 & BK110

Cat #	Description	Mount
BK105	LED Mini Light Bar Clear Lens with Colored LEDs	Permanent Mount
BK106	LED Mini Light Bar Colored Lens with Colored LEDs	Permanent Mount
BK107	LED Mini Light Bar Clear Lens with Colored LEDs	Magnetic Mount
BK108	LED Mini Light Bar Colored Lens with Colored LEDs	Magnetic Mount
BK109	LED Mini Light Bar Clear Lens with Colored LEDs	Suction/Magnetic Mount
BK110	LED Mini Light Bar Colored Lens with Colored LEDs	Suction/Magnetic Mount



Frontier Light Bar

- ▶ Includes both permanent and magnetic mounting hardware
- ▶ Change flash patterns with the "Capacitive Touch" feature (just the touch of a finger)
- ▶ 21 flash pattern selections provide plenty of options for alerting oncoming traffic
- ▶ 4 high quality Torus™ 6-LED lightheads in front and rear, 4 high quality Torus™ 9-LED lightheads in corners
- ▶ 9' straight cord with lighter plug and switch
- ▶ Rated 100,000 hour life

Change patterns by touch!



- ▶ Dimensions: 17.2" Lx3.8" Hx10.8"D
- ▶ 5 year LED warranty

SPECIFY COLOR: Blue, Red, Red/Blue or Amber LEDs for BK103
 SPECIFY COLOR: Blue, Red or Amber Lens/LEDs for BK104

BK103	Frontier Light Bar Clear Lens with Colored LEDs
BK104	Frontier Light Bar Colored Lens with Colored LEDs (Lens and LEDs Same Color)



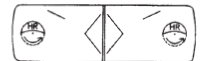
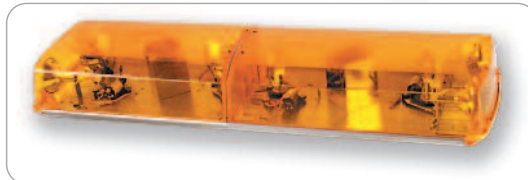
Star Warning Light Bars

Made with impact-resistant polycarbonate lenses and heavy-duty aluminum base, this bar is built to last. Features include fully RF suppressed motor, aerodynamic low profile, 90 RPM, all halogen bulbs and your choice of 12 or 24v. Permanent mount included. **Ship. wt. 35 lbs.**

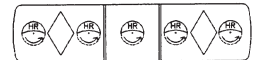


SPECIFY: 12 or 24 VOLT
 SPECIFY: LENS COLOR
 SPECIFY COLOR: Red, Blue, Amber, Clear

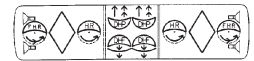
AR240	Star Warning Bar, 36"
AR241	Star Warning Bar, 48"
AR242	Star Warning Bar, 48"
AR243	Gutter/Gutterless Mount Kit, Specify Vehicle



AR240 - 2 Rotators,
 2 V-Shaped Mirrors,
 2 Wall Style Mirrors



AR241 - 5 Rotators,
 2 Diamond Mirrors



AR242 - 4 Rotators,
 4 Alley Lights, 2 Rear Amber,
 2 Diamond Mirrors, Flashers,
 2 Takedown Lights

JetSOLARIS Lightbars with ROC™ and SOLARIS® Technology

- ▶ All models feature SOLARIS® LED reflector technology
- ▶ Innovative ROC™ (Reliable Onboard Circuitry™)
- ▶ Can be configured to meet NFPA requirements
- ▶ Available in 48" and 54" lengths
- ▶ 5 year LED product warranty
- ▶ 360° of warning coverage
- ▶ Color: Red with clear center



FEDERAL SIGNAL CORPORATION
Emergency Products



BA139 48" Red JetSOLARIS Lightbar with ROC™ and SOLARIS® Technology

BG178 54" Red JetSOLARIS Lightbar with ROC™ and SOLARIS® Technology

Star Interceptor

- ▶ Wider design for better light distribution
- ▶ Sloped end domes for better vehicle contour image
- ▶ Adjustable lower level lights allow optimal positioning of light output
- ▶ Patented shock-mounted rotator system for long-lasting, quiet, rotator operation
- ▶ Low profile



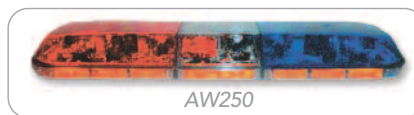
- ▶ Dual ball-bearing rotator spindle for smooth, quiet, rotator operation
- ▶ Ship wt. 35 lbs.

SPECIFY COLOR: Red, Blue, Amber or Clear

AW248 46" Halogen 4 Rotator Warning Package

AW249 46" 4 Strobe Warning Package

AW250 46" 6 Halogen Rotator Police Package with Arrow Director



AW250

NFPA Justice® Super-LED® Series

The performance you want in a cost-competitive, Super LED® lightbar. Justice® is loaded with options and designed for easy operation, upgrade and serviceability. The sleek 2 1/4" profile not only provides today's popular stealth appearance but reduces air drag for better fuel economy.



- ▶ 12" wide and only 2 1/4" high (without mounting feet)
- ▶ Black polycarbonate base on an extruded aluminum platform for added strength
- ▶ Solar Panel compensates for parasitic draw from the vehicle's computer, improves battery efficiency and extends battery life
- ▶ Clear outer lens standard with a moisture resistant compression fit gasket

- ▶ Standard passenger side cable
- ▶ Service oriented. Change colors, upgrade or service lightbar in the field
- ▶ Simply remove 4 or 6 screws to access any section of the lightbar
- ▶ Replace any lighthouse by removing one screw and single connector

COLOR: Red and White

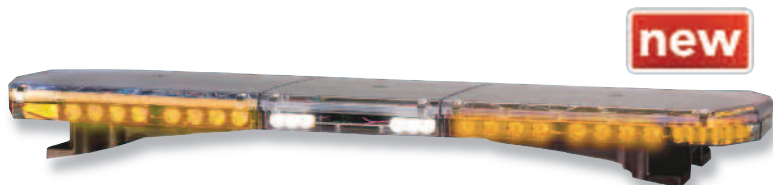
BL293 56" NFPA Justice® Super-LED® Series

BL294 62" NFPA Justice® Super-LED® Series

WHELEN

211F™ LED Lightbar

- ▶ Using the latest LED Torus™ technology, the 211F™ lightbar series provides more superior light output and better off-angle lighting than our current 2100 models using Optix lighthoods
- ▶ Independent flashing lighthoods (no central controller board required)
- ▶ Economical, yet advanced, this lightbar offers a host of standard features delivering the best low profile LED lightbar on the market
- ▶ Flasher (both Halogen and LED)



- ▶ User selectable flash patterns changeable on each lighthouse
- ▶ LIT3 mounting kit with adapter included
- ▶ Non-central controller
- ▶ Clear lens standard
- ▶ Dimming mode

SPECIFY LENS COLOR: Clear, Red or Amber

SPECIFY LED COLOR: Blue, Red or Amber

BL478 4 Torus™ 4 LED Heads, 4 Torus™ 6 LED Heads in the Corners & Halogen Alley & Take Down Lights

BL479 9 Torus™ 4 LED Heads, 4 Torus™ 6 LED Heads in the Corners & Halogen Alley & Take Down Lights

CODE 3
PUBLIC SAFETY EQUIPMENT, INC.

LED Perimeter Lights

Compact Lights That Make a Big Impact on Your Vehicle



MicroPulse™ 6-LED Lighthead

Stealth and power are united in the MicroPulse™ 6-LED lighthead. Nineteen multiple flash patterns create versatility that allows the lighthead to flash as a solid or split-color and operate from a 12-24 VDC power source. Plus multiple MicroPulse™ lightheads can synchronize for optimum enhancement of any lighting application.

- ▶ Multiple mounting options for various applications
- ▶ Superior warning with six high power LEDs
- ▶ Super slim design offers a wider range of mounting areas
- ▶ 3 year LED warranty

SPECIFY MOUNT: Surface or Hood

SPECIFY COLOR: Red-Red, Red-Blue, Blue-White, White-White, Amber-Amber

BL110 MicroPulse™ 6-LED Lighthead



IPX6 LED Warning Light

The "IPX6" LED warning light models feature Federal Signal's SOLARIS® LED reflector technology and our SpectraLux™ multi-color LED capability. These compact LED warning lights are ideal for use as grille lights or use in other auxiliary warning light applications. Each IPX6 model includes a black polycarbonate mounting bezel, gasket, and mounting hardware. Horizontal mount.



SPECIFY COLOR: Amber, Blue, Red, White or Green

BL151 IPX6 LED Warning Light



QuadraFlare™ 9"x7" LED Perimeter Warning Light

- ▶ NFPA 1901 and GSA KKK-E compliant models
- ▶ Outstanding off-axis warning
- ▶ 26 built-in flash patterns, including "Quad-X" and "Steady"
- ▶ Flash patterns are push-button programmable
- ▶ Independent side control on split LED models
- ▶ Clear or color lens options
- ▶ 5 year warranty on LED components

SPECIFY LED COLOR: Red, Blue, or Amber

BH077 9"x7" QuadraFlare™ LED Warning Light Colored Lens

BH078 9"x7" QuadraFlare™ LED Warning Light Clear Lens

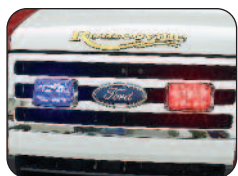
BH095 Chrome Trim Bezel

BH096 Black Trim Bezel



QuadraFlare™ 6"x4" Perimeter Light

- ▶ Advanced SOLARIS® Technology in a 6"x4" package
- ▶ 5 year warranty on LED components
- ▶ Available with built-in flasher featuring 16 selectable patterns
- ▶ Meets NFPA and GSA K-spec compliant upper and lower level requirements



Amber Blue Red

Shown w/BG201

SPECIFY LED COLOR: Red, Blue, or Amber

BG199 QuadraFlare™ Color Lens LED Warning Light*

BG200 QuadraFlare™ Clear Lens LED Warning Light

BG201 Chrome Trim Bezel with Gasket

BG202 Black Trim Bezel with Gasket

* Color lens are the same color as LEDs

IMPAXX Light Head

- ▶ High-output LEDs and SOLARIS® Reflective Technology
- ▶ Compact size allows for a variety of mount locations
- ▶ Advanced off-axis and center focused lens available
- ▶ Fully encapsulated waterproof housing
- ▶ Wide variety of synchronized patterns
- ▶ 5 year warranty



Amber Blue Red White

SPECIFY LED COLOR: Amber, Blue, White or Red

BG187 IMPAXX 3 LED Clear Lens Warning Light

BG188 IMPAXX 3 LED Color Lens Warning Light*

BG189 Chrome Surface Mount

BH071 External Mount

* Color lens are the same color as LEDs

EMERGENCY LIGHTS & SIRENS

SPECTRA 900 Surface Mounted LED Light

UltraBright Scene Lighting for Emergency Response Vehicles

- ▶ UltraBright 5,000 lumens light output using 24 white LEDs
- ▶ Completely waterproof even if light is fully submerged
- ▶ Easy to install, no panel cut-out
- ▶ Innovative lens focuses 100% of the light directly where it is needed
- ▶ Rubber gasket protects vehicle surface
- ▶ Chrome bezel



SPECTRA 900

FRC
FIRE RESEARCH CORP.
choose the best.



Slim profile
surface mount
only 1 3/4"



SPECTRA 900
LED Illumination

Quartz Halogen
Illumination

BK075 SPECTRA 900 Surface Mounted LED Light

Firefly Compartment Mounted LED Light

Most Compact UltraBright White LED Light for Compartments, Panels, & Under Body Applications

- ▶ Small and compact - 4 white, long life LEDs
- ▶ UltraBright 650 lumens light output
- ▶ Mounts in any orientation and on any flat surface
- ▶ 12 VDC-0.8 amps / 24 VDC-0.4 amps
- ▶ LEDs are housed in a waterproof anodized aluminum case
- ▶ Low power consumption saves energy
- ▶ Instant on at full intensity
- ▶ 5 year LED lighting warranty



FRC
FIRE RESEARCH CORP.
choose the best.

BK095 Firefly Compartment Mounted LED Light (12 VDC 0.8 amps)

Diamondback™ LED Perimeter Warning Light

These LED lights provide incredible brightness, unmatched directional visibility, customized pattern and styling flexibility, and unique serviceability. Each light incorporates patented V-LED™ technology, allowing for the LEDs to be field serviceable and upgradeable. The light flash patterns can be completely re-configured via wireless downloads without removing the lens or lamp from the vehicle. Loaded with powerful innovations, the Diamondback™ delivers unprecedented performance to the emergency response community.

- ▶ Patented V-LED™ technology, for superior thermal efficiency and excellent brightness
- ▶ 4 independently controlled LED segments allow for unmatched flash pattern options: left/right, up/down, x-pattern, chasing and many more
- ▶ Flush mount design utilizes only four screw holes and a wire exit hole



WELDON
A DIVISION OF AKRON BRASS



BH042

Cat#	Description	Red LED	Amber LED	Blue LED	White LED
BG203	4"x6" LED with Color Lens Warning Light	•	•	•	N/A
BG204	4"x6" LED with Clear Lens Warning Light	•	•	•	•
BH041	2"x6" LED with Color Lens Warning Light	•	•	•	N/A
BH042	2"x6" LED with Clear Lens Warning Light	•	•	•	•
BG205	Chrome Bezel for 4"x6" Light				\$24.95
BH043	Chrome Bezel for 2"x6" Light				\$20.95

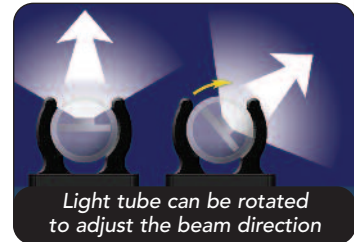
SUNSTRIP Ultrabright LED Light

UltraBright White LED Light for Compartments, Panels, Under Body Applications, Walkways & Stairwells

- ▶ More than 300 lumens of LED light per 18" length
- ▶ LEDs housed in a strong 5/8" diameter lexan tube
- ▶ Designed tough to withstand any vehicle vibration
- ▶ Waterproof and submersible
- ▶ Great for all applications and easy to install
- ▶ Long operating hours – rated at 50,000 hours
- ▶ 5 year LED lighting warranty

FRC
FIRE RESEARCH CORP.
choose the best.

SUNSTRIP



Cat#	Description	Length	Lumens	Current@12v
BK352	LED 12vdc SUNSTRIP Light	9"	150	0.17 amps
BK353	LED 12vdc SUNSTRIP Light	18"	300	0.35 amps
BK354	LED 12vdc SUNSTRIP Light	27"	450	0.52 amps
BK355	LED 12vdc SUNSTRIP Light	36"	600	0.70 amps
BK356	LED 12vdc SUNSTRIP Light	45"	750	0.87 amps
BK357	LED 12vdc SUNSTRIP Light	54"	900	1.05 amps
BK358	LED 12vdc SUNSTRIP Light	63"	1050	1.22 amps

Roof Mount Halogen Spotlight

Features interior control handle with finger-tip switch for safety and convenience. Gives full 360° continuous vertical rotation and 180° horizontal adjustment. 6" round light head with lead-proof design and clear halogen lamp with your choice of 160,000 CP (50-watt) or 245,000 CP (100 watt). Standard 2 3/4" roof clearance. Includes universal mounting bracket, template and instructions for easy installation. Ship. wt. 7 lbs.



Interior control



J510	Roof Mount Spotlight, 245,000 CP
T608	Roof Mount Spotlight, 160,000 CP

Panel Light/Shield



Lights up your pump panel for easy visibility and helps protect it from the weather at the same time. Comes with weather proof sealed lights. Polished anodized aluminum. Custom sizes available. Ship. wt. 3 lbs.

AJ551	Panel Light/Shield, 18"
AJ552	Panel Light/Shield, 30"
AJ553	Panel Light/Shield, 52"

EMERGENCY LIGHTS & SIRENS

Vehicle Tail Lights

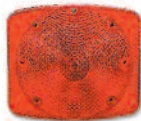
The AF496, AF497, AF498 and AF499 are 7"x8" surface mount lights, to be used as warning or scene light. AF500 measures 2 1/2"x5 1/2" and can be used as a step light or ground light. Ship. wt. 2 lbs.



AF497 - Turn Light with Arrow



AF496



AF499



AF498



AF500

AF496	Tail Light/Stop Light, Red
AF497	Turn Light w/Arrow (Specify Red or Amber)
AF498	Back-Up Light
AF499	Red Light
AF500	Intersection Light (Specify Red or Clear)

Oscilaser

The Oscilaser offers a simple and reliable rotating motion or a model with an up and down movement while oscillating side to side, with a parabolic reflector for maximum light output. The Oscilaser also has an optional Bezel, and can be mounted on the front, rear, grille, bumper. Dimensions: 6 3/4" L x 3 3/4" W. Ship wt. 1 lb.



CODE 3
PUBLIC SAFETY EQUIPMENT, INC.

Amber Blue Red Clear

SPECIFY LENS COLOR: Amber, Blue, Clear or Red

AW255	Oscilaser with Flush-Mountable Bezel
AW256	Oscilaser Flush-Mountable

Siren/Speaker Package

- ▶ LED speaker diagnostics
- ▶ Wail, Yelp, Air horn, Phaser, Manual, and Two Tone
- ▶ Self-resetting circuit protection against speaker shorts
- ▶ Integrated public address microphone
- ▶ 7 light functions
- ▶ Dual color backlighting on keypad (Amber and Red)
- ▶ 4 position progressive slide switch w/LED indicators
- ▶ Drives one or two 100 watt speakers
- ▶ Patent pending cyclonic expansion chambers
- ▶ Ultra compact - only 3" deep
- ▶ Rugged glass filled nylon housing - will not rust
- ▶ Includes: D-44 Cyclone™ speakers (BH178) and SPBRK-16 Universal "L" Bracket



BH177 Siren/Speaker Package

Stealth Switch Control Panels

The industry standard in compact, reliable switch control panels. Used on thousands of emergency vehicles all over the United States and Canada. Features mini-Euro style rocker switches with LED effect indicator lights and vinyl coated steel housing. Interchangeable backlit legend inserts are white with black letters. *Ship. wt. 2 lbs.*

Stealth 2 Panel

Features 4 rocker switches. A 40 AMP relay/40 AMP circuit breaker is included. (3) 20 Amp fused switch output, and ATO fuses. Mounting bracket included.



Stealth 3 Panel

Features 6 rocker switches. A 40 AMP relay/40 AMP circuit breaker is included. (5) ATO fused switch outputs. 18" pigtail included. Mounting bracket included.



AR238 Stealth 2 Panel

AR239 Stealth 3 Panel

Wig-Wag Headlight Flasher Kit



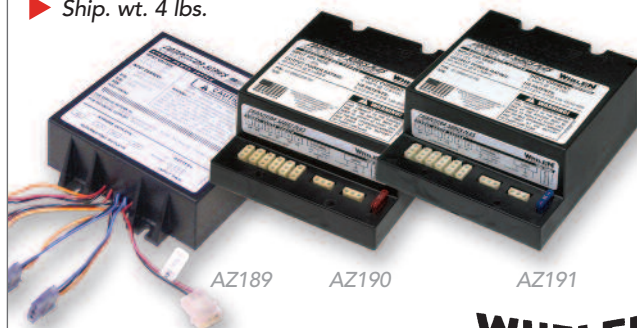
Produces the popular Wig-Wag flash for headlights at 90 flashes per minute. Features double-pole, double-throw rocker switch, indicator light with an electromechanical alternating Tridon flasher. The complete kit comes with 12-foot wire and mounting bracket. Black metal housing with "On" indicator light. *Ship. wt. 1 lb.*

REPLACEMENT FLASHERS AVAILABLE

AD924 Wig-Wag Flasher with Tridon Flasher

50, 60 & 90-Watt Power Supply

▶ *Ship. wt. 4 lbs.*



AZ189	50-watt Output, 4-Outlet, 67-watt Input
AZ190	60-watt Output, 6-Outlet, 80-watt Input, 12/24 VDC
AZ191	90-watt Output, 6-Outlet, 1200-watt Input

WHELEN

STAR-PAK® Remote Strobe Kit

The STAR-PAK® remote strobe kit incorporates six outlets with 24 customer-selectable flash patterns all in a 90 watt system. Multiple strobe head combinations can be enabled. Customer-selectable Day/Night mode. Features power reduction to operating heads in case of head failure, RFI protection, cooling fan, and Visual System Diagnostics (VSD™). Ships complete with power and control leads and instructions.

BG180:

- ▶ 90w remote power supply
- ▶ Clear strobe tube assemblies
- ▶ 15' cables w/attached connectors
- ▶ Lighted toggle switch

BG181:

- ▶ 15' cables w/attached connectors
- ▶ 20' cables w/attached connectors
- ▶ 90w remote power supply
- ▶ Clear strobe tube assemblies
- ▶ Lighted toggle switch



BG180 STAR-PAK® 90w Kit w/6-Phantom Strobe Heads

BG181 STAR-PAK® 90w Kit w/4-Phantom Strobe Heads

5-Function Siren With Phaser Mode

With the ability to run at 200 watts for extended periods, the AR264 sets the standard for emergency vehicle sirens. The primary operating modes are Phaser, Yelp, Wail, Hands-Free, Manual, Alert and Radio. It features separate volume controls for the radio repeat and public address functions, public address override, and speaker diagnostics. The siren is backlit for easy nighttime readability. *Ship. wt. 9 lbs.*

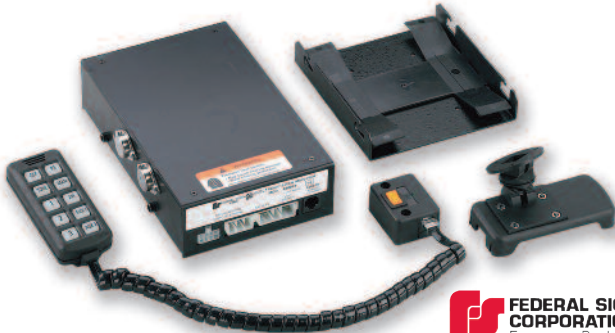


AR264 5-Function Siren



PA650 Series Remote Siren

- ▶ Full featured 100w remote siren with light control
- ▶ Microphone/switch controls combined
- ▶ Progressive push button control mimics slide switch action
- ▶ Eight 10 amp light and auxiliary relay positions
- ▶ Perfect for undercover and slick top applications



BG182 PA650 Series 100w Remote Siren

Compact and Reliable Mini-Siren

Efficient, economical and reliable performance with effective traffic clearing capability. 100-watt output and operates from any 12-volt vehicle system. Features wail, yelp, priority, manual (peak and hold) and airhorn siren tones controlled by two rocker switches. Built-in intersection clearing feature adds both an eight-second yelp or eight-second priority tone for effective traffic management. Includes mounting bracket. Dimensions: 1 1/2"Hx5 1/2"Lx6 1/2"W. *Ship. wt. 3 lbs.*



AR234 Mini-Siren

V-Con® Siren

Compact, Easy-to-Use, and Reliable

- ▶ All models have PA, radio-rebroadcast, air horn, backlighting, "Hit-N-Go" function, and 3 siren tones: Wail, Yelp, & Hi-Lo or HyperYelp™
- ▶ BA14201: HyperYelp™
- ▶ BA14202: Hi-Lo
- ▶ BA14203: Includes light controls - 3 level slide switch and 4 on/off push buttons for 7 levels of control
- ▶ Dimensions: 6 1/2"Lx2 1/2"Hx5 1/2"W
- ▶ *Ship. wt. 5 lbs.*



BA14201	V-Con® Siren with HyperYelp™
BA14202	V-Con® Siren with Hi-Lo
BA14203	V-Con® Siren with Hi-Lo with Light Control

PA 300 Electronic Siren

Plug In PC Board - Includes Airhorn Sound

The W691 provides all basic siren tones; TAP II, PA, radio rebroadcast, as well as a built-in airhorn sound with siren override. It is protected against all failure modes by a fuse that is replaceable without tools and can operate from any 12-volt positive or negative ground vehicle electrical system. Taps are included for 100 or 200-watt speakers. Comes complete with a swinging bracket which enables mounting in a variety of positions. *Ship. wt. 6 lbs.*



Illuminated face plate



W691 PA 300 Electronic Siren

Mechanical Tone Siren Speaker Package

The new Mechanical Tone Siren Speaker Package is designed for volunteer firefighters who need to clear traffic in a big way. The small, compact Volunteer Siren offers the standard tones wail, yelp, and manual and also offers the new Carson mechanical tone. The rubberized face of the siren is completely enclosed and smooth allowing easy access to everything you need. The remote amplifier features an output indicator on the face for diagnostics. The Mechanical Tone Siren Speaker Package also includes a mountable holster.

BL608 - Volunteer Siren with Mechanical Tones:

- ▶ Remote hand-held unit with push-button controls
- ▶ Compact 100 watt electronic siren amplifier with 20 total amps of light control
- ▶ 2 - Illuminated rockers for light control
- ▶ 6 - Push-button switches for mechanical, wail, yelp, phaser, manual, and air horn
- ▶ Power indicator on remote amplifier
- ▶ Horn Ring Cyclor (HRC2) for hands-free siren tone control
- ▶ Amplifier and light controls fused separately and externally
- ▶ Short circuit, high voltage and reverse polarity protection systems
- ▶ Sound output indicator light for diagnostics
- ▶ Mounting bracket
- ▶ Dimensions: 2"Hx6"Wx6"D
- ▶ No-hassle 5-year limited warranty

BL608



new

Holster



BL609



BL610 - Compact 100 Watt Speaker:

- ▶ Ultra-compact hexagonal shape for flexible installation on any vehicle
- ▶ 100 watt output
- ▶ 11 Ohms impedance
- ▶ Integrated universal mounting bracket design
- ▶ Black, corrosion-resistant metal structure
- ▶ 400Hz - 3500Hz operational frequency spectra
- ▶ Dimensions: 6^{17/50}"Wx5^{1/10}"Hx2^{7/25}"D
- ▶ Weight: 6 lbs.
- ▶ 1-year limited warranty

BL611 - Mechanical Tone Siren Speaker Package Includes:

- ▶ BL608: Volunteer Siren with Mechanical Tones
- ▶ BL610: Compact 100 watt speaker
- ▶ Hand-held siren holster

BL611	Mechanical Tone Siren Speaker Package
BL608	Volunteer Siren Only
BL610	Compact 100 watt Speaker Only

Under Hood Stutter Horn System

- ▶ 100 watt electronic air horn amplifier
- ▶ Ultra-compact for exterior-mount installation on any vehicle
- ▶ Waterproof
- ▶ "Stutter" air horn sound
- ▶ Wires to horn ring or separate switch (not included)
- ▶ Power indicator light for diagnostics
- ▶ Basic wiring for simple, easy installation
- ▶ Dimensions: 1^{1/2}"Hx4^{1/8}"Wx2^{1/8}"D
- ▶ No-hassle 5-year warranty
- ▶ *Legal for POV use in most states. Please consult your local/state vehicle codes to ensure compliance with vehicle horn regulations.

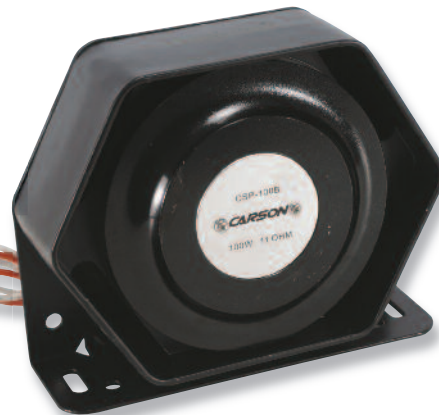
Stutter Horn Amp



Panel



new



BL609	Under Hood Stutter Horn System
-------	--------------------------------

e-Q2B Electronic Siren

The e-Q2B has been completely designed to incorporate 200W Class D audio amplifier for increased reliability. In addition, external diagnostics have been added to monitor power, output voltage and current monitoring. New features include park kill input, which immediately shuts off the siren when vehicle is in park and horn ring input which allows the user to cycle through siren tones. Finally, an audio output has been added to allow the e-Q2B to work with the Federal Signal Rumbler Intersection Clearing System.

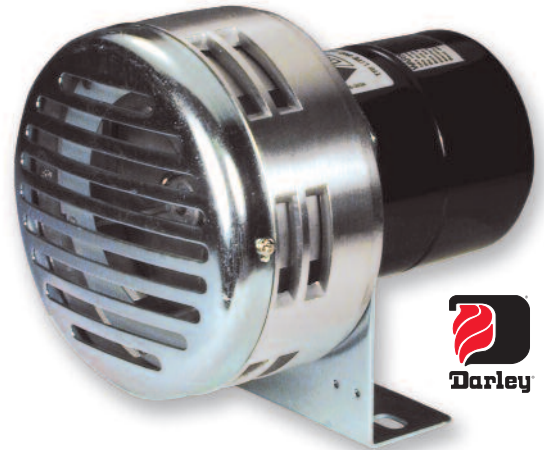


*Delivers "Q" Power
at a fraction of the
current draw*

AR235 e-Q2B Electronic Siren

Darley Special Siren

This siren is compact, lightweight and corrosion-resistant. Features a 4 1/2" rotor, pedestal mount and outputs 101 dB at 10'. Draws 12.5 amps at 12vDC. Measures 7" Lx5" Hx 4 1/2" D. Ship. wt. 4 lbs.

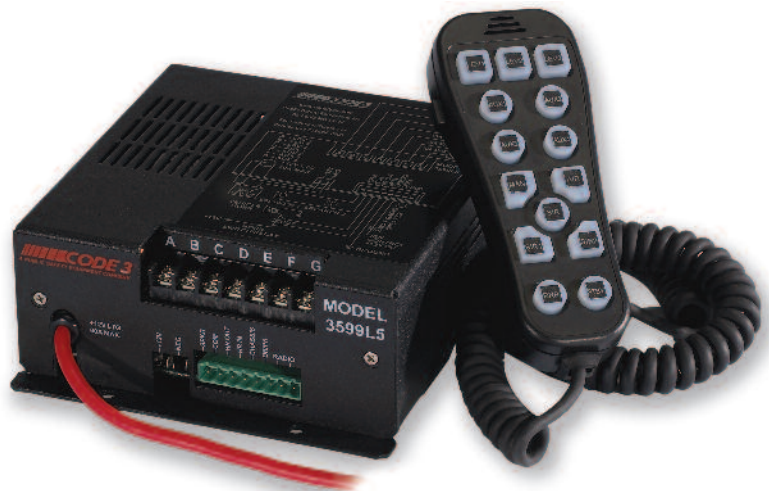


AF453 Darley Special Siren

Remote Siren System with Handheld Controller

CODE 3
PUBLIC SAFETY EQUIPMENT, INC.

- ▶ PA with built-in noise cancelling mic
- ▶ Radio rebroadcast
- ▶ Stand-by
- ▶ Siren scroll
- ▶ Park kill with Level 3 drop-out option
- ▶ Horn ring transfer
- ▶ Vehicle light control buttons (3 progressive, 4 auxiliary)
- ▶ All buttons are backlight with on/off color change
- ▶ Level 3 auto siren tone on
- ▶ Keypad, backlight off option
- ▶ Push button programmable airhorn pitch tones
- ▶ 2 programmable airhorn pitch tones
- ▶ Volume control thumb-wheel on hand-held controller
- ▶ Siren Lock
- ▶ Timed output
- ▶ Momentary switch available
- ▶ Optional jumpers via special order
- ▶ EU lock to any level
- ▶ 5 year warranty



BK113 Remote Siren System with Handheld Controller

Federal Q Electromechanical Siren

Beautiful, Streamlined, Chrome Plated, Commands Respect

This siren includes grille, brake, and chrome finish. It is designed to be pedestal mounted but is also offered less the rear housing for flush mounting. Heavy-duty coaster clutch is subject to very little wear. The unique clutch design delivers a longer coast-down sound once power is removed, thereby reducing battery drain. For quick silencing, an electric brake is also a standard feature. 12-volt, operating current 100 amps. The AC895 model comes complete with stainless steel finish, grille, brake, pedestal and rear housing. Model AC896 is for flush mounting and does not include pedestal or rear housing. Ship. wt. 49 lbs.



AC895 Electromechanical Siren

AC896 Electromechanical Siren for Flush Mounting

▶ 123 dB at 10 feet

FEDERAL SIGNAL CORPORATION
Emergency Products

Federal Signal 100-Watt Speaker

The 100-watt speaker uses advanced housing material and field replaceable neodymium drivers to provide effective, high-quality sound at an affordable price. The speaker only weighs 6 lbs. and measures 7.7"Wx5.7"Hx4.7"D. The speaker is easily rotated allowing for either vertical, or horizontal mount orientation, and the P.E.T. (polyethylene terephthalate) housing material is exceptionally strong, while resistant to heat, moisture and will not corrode as most metallic materials do. *Ship wt. 6 lbs.*



AW243 Federal Signal 100-Watt Speaker

DynaMax™ Compact Speaker

The slimmest 100-watt speaker on the market today, measuring just 5.5"Hx5.9"Wx2.7"D. The DynaMax™'s ultra-slim, lightweight (5 lbs.) design allows it to easily install in many locations on your emergency vehicle. This exceptionally durable speaker is fully encapsulated; no terminals are exposed. Solid aluminum construction incorporates the driver and projector into the housing allowing the unit to operate cooler and run more efficiently than conventional speakers. Black finish. *Ship. wt. 5 lbs.*



Just 2⁵/₈" wide



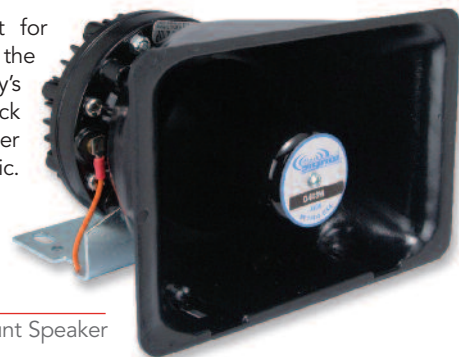
BG183 DynaMax™ Compact Speaker
BG184 Universal Bail Bracket

Truck Mount Speaker

Rectangular speaker is perfect for truck mounting. Made to take the heavy and extended use of today's vehicle applications. Has black baked enamel finish on the driver and rectangular bell is black plastic. *Ship. wt. 10 lbs.*



AB343 100-watt Truck Mount Speaker



D-44 Cyclone 100 Watt Speaker

The new Cyclonic 100 watt speaker is an industry first using the advantages of cyclonic technology. 100 watts of power produces a noticeable difference in sound output as the sound waves are pushed out in a cyclonic action created by the unique housing design.

- ▶ Cyclonic Expansion Chamber for clear and crisp sound
- ▶ Glass filled nylon housing
- ▶ Replaceable drive
- ▶ Universal two-piece adjustable bracket
- ▶ Only 3" deep fits into all applications
- ▶ *Ship. wt. 7 lbs.*

BH178 D-44 Cyclone 100 Watt Speaker



Grille or Bumper Mounted Speaker

A high-visibility speaker. Has high-gloss electropolished bell housing made from drawn aluminum for strength and durability. Can be grille or bumper mounted. *Ship. wt. 10 lbs.*



AR236 100-watt Grille or Bumper Mounted Speaker



Neodymium Speaker

The Neodymium Speaker's advantage revolves around its newly designed drier component. The element neodymium, and magnetic materials are combined to create a speaker package that is powerful, compact and affordable. This low-cost, compact design provides for added mounting location flexibility, and is compatible with all Federal Signal electronic siren amplifiers. *Ship. wt. 4 lbs.*



AW242 Neodymium Speaker

