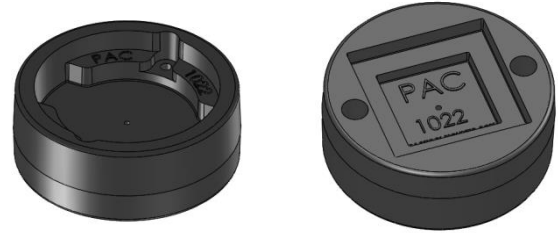


# RAM BASE MOUNT

## P/N 1022



The Ram Base Mount is versatile 2 sided support. One side as a base for hydraulic rams, struts and other cylindrical equipment. The opposite side is suitable for securing square items such as jacks, struts and other square ended equipment.

### FEATURES

- Heavy duty construction.
- Double sided.
- Made from high quality material.
- Weather, UV resistant
- Non-conductive
- Stainless Steel Fasteners provided
- Mounts to PAC tool boards and other flat surfaces

### EQUIPMENT

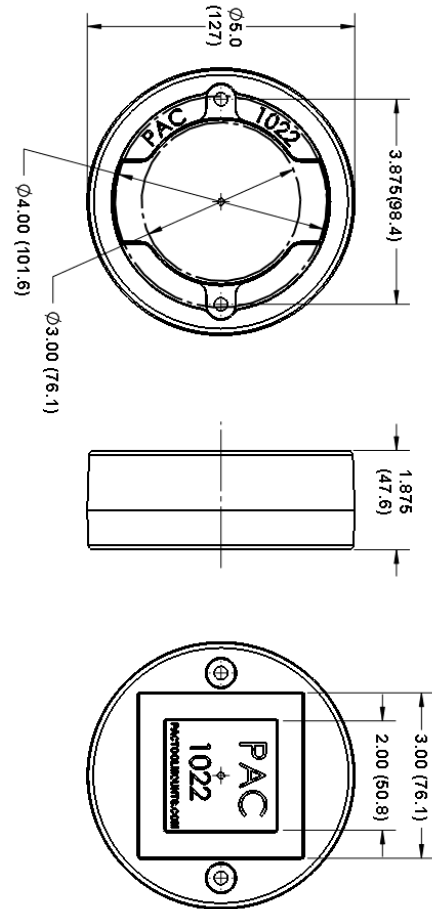
- **Rams, struts, posts.**

Rounds: Up to 4" (101mm)

Rectangular: 2" (50 mm) & 3" (76mm) square pockets

Irregular: 1-1/2" (38) x 4" (101mm)

### SIZE & DIMENSIONS



### PROPERTIES

P/N	WT.	MAX. DYNAMIC LOAD	MAX. STATIC LOADS	GRIP RANGE	TEMP RANGE	FLAME RESISTANCE	PAINTABLE		
1022	4.5lbs 2kg	N/A	100lbs + (45 kg)	N/A	-20 to 52 °C -4 to 125 °F	GOOD	Yes		

Performance Advantage Company

Lancaster, New York

[www.pactoolmounts.com](http://www.pactoolmounts.com)

888-514-0083

REFERENCE	QTY	REMARKS	PROJECT
			LOCATION
			BUYER
			DEALER
			BUILDER
			SUBMITTED BY:
			DATE:



#### TYPICAL SPECIFICATION

Locating bracket shall be PAC PN 1022.  
Bracket shall be made from tough, corrosion free material. Hardware shall be stainless steel. Design includes two sides for round or square mounting applications.  
Users shall be protected from conductivity.

The cost effective **RAM BASE MOUNT** is a versatile and easy to use product. It provides a location for a wide variety of tools and equipment. Intended to be used with a PAC locking bracket.

- One side features a round pocket (ram mouning)
- The other side features square pocket (strut mounting)
- Rugged injection molded components made from high quality materials
- Weather, UV resistant
- Non-conductive

