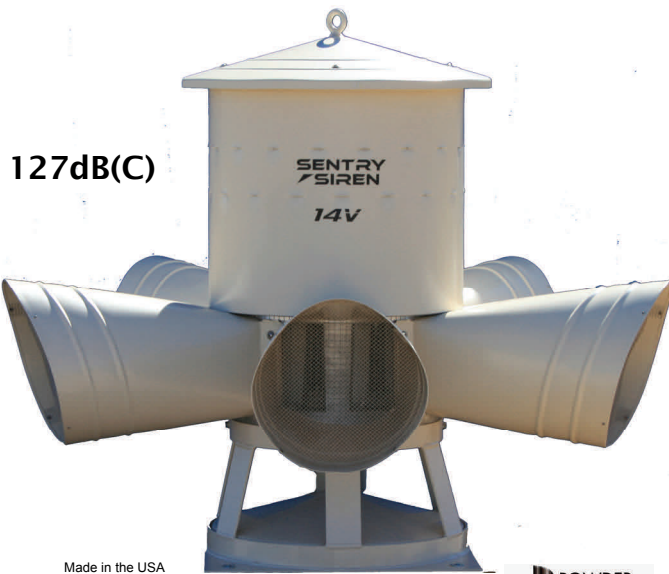


14V / 14V-B

Premium Warning Siren

The Ultimate Combination of Power,
Performance, and Price

SENTRY
SIREN Inc.®



- **100% Maintenance Free**, not just the siren, the whole system!
- **Non-Rotating**: Forget the worries of rotating sirens, this unit has only two moving parts and does not require lubrication or any type of scheduled adjustment or maintenance.
- **Compatibility**: This siren will integrate seamlessly with most existing siren systems.
- **5 year Warranty**: rest assured your siren will be functional at all times and enjoy the confidence of free lifetime tech support and the best customer service in the industry.

The ground-shaking 14V was designed to provide the same power and performance of our two-tone siren line with a single tone / single row of projection horns. Perfect for single or multiple siren installations, this siren is FEMA and USDA grant compliant.

This 15 Horsepower brute is rated at 127dB(c) @ 100 ft. continuous*. Not just for 25% of its cycle time, like its rotating competitors, the 127 dB measurement is for 100% of its full volume run time. Plus, this 127 dB is broadcast at 600Hz. The 14V's mid-range frequency perfectly combines the penetrating ability and low fade rate of low frequency sirens with the sound wave reflectivity of high frequency sirens.

The 14V is available in three phase power and can be upgraded to battery backup by selecting its AC/DC twin brother, the 14V-B. Perhaps the key feature of the 14V-B is the length of time that the siren will run on batteries. As is common in the United States, storms frequently come in lines over a 3 or 4 hour period. If the first storm knocks out power, you may need a siren which can be sounded 6 or 7 times before power is restored. The Sentry model 14V-B can sound 10 full 3 minute signals using its battery reserve; that's more than twice the reserve capacity of competitive sirens.

Unmatched in the siren industry, the 14V and 14V-B creates a state of the art system, with tried and true technology, for a winning

ELECTRO-MECHANICAL SIRENS

produce stronger and further reaching sound than electronic sirens while providing far better reliability.

OMNI-DIRECTIONAL DEVICES

"..present a distinct advantage.. over rotational devices," according to FEMA's warning system guide. It says "a rotational device will have an overall lower dB level when assessed across a given time period than an Omni-directional device operating at the same frequency." (4.4.5 FEMA OWS Technical Bulletin 2.0)

Further, the guide states: "Omni-directional sirens provide a greater area of coverage than do rotating or directional devices. They provide a more constant signal that improves public alerting..." (4.4.5 FEMA OWS Technical Bulletin 2.0)

14V / 14V-B

Premium Warning Siren

Performance

This siren is rated @ 127 dB(c) at 100 ft.*

Estimated sound radius is 5,400 ft. continuous.**

Sound pattern is Omni-Directional producing 100% volume at peak RPM 100% of the siren cycle time.

The 14V and 14V-B produce a single pitch design with one rotor producing 600 Hz.

Power Requirements

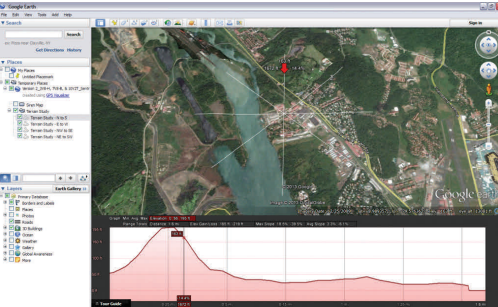
14V - Three Phase AC Siren:

15 HP: 208/230V (460V-special order), 60 Hz
NP/NEC FLA (230V) - 34.0 / 42.0
Uses Starter # S7AW

14V-B - AC/DC Battery Backup Siren:

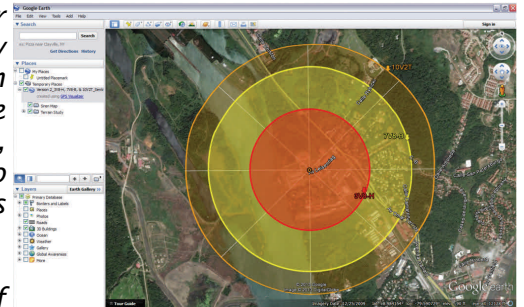
Siren operates on AC rectified power when available then automatically switches to battery backup power when AC power fails. 14V-B uses one (1) American Made, 14 HP, DC motor. 125 Amp, 208-240 VAC, 1 phase power required. Separate, 30 Amp, 110 VAC circuit required for controls.

Additional Services / Accessories



Need a site design? One of our engineers will work with you step by step to determine the optimum location for your siren(s). We analyze topography and terrain, population, available infrastructure, and more to design a siren system that best suits your community's needs.

Best of all, this is done 100% free of charge, no obligation!



Siren Starters and Controllers:

Our "S" series siren motor starters and "Generation" series siren controllers make powering and activating your siren simple and easy. Call us today and let our knowledgeable staff help you select the perfect control solution for your system!



"S" series motor starter

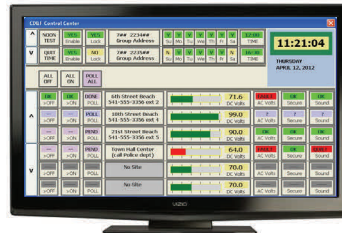


GEN-1 manual controller



GEN-3 radio controller

Be sure to ask about our full line of siren activation, weather monitoring and communication packages including "Storm Sentry", the world's first fully automatic siren activation system, "S.T.A.R.", our state-of-the-art report-back status monitoring system, and "E.P.I.C.", the world's first PC-based FEMA IPAWS interface.



* - Sentry rating based on field tests using FEMA Guidelines; assumes perfect conditions, actual coverages may vary based on multiple factors. No guarantee is expressed or implied concerning dB or SPL of sirens.

** - Based on FEMA guidelines of 9 dB drop and assumes perfect conditions, actual coverages may vary based on unforeseen factors. No guarantee is expressed or implied concerning sound coverage of sirens.