



CrewProtect™

In-Cab Multi-Threat Air Filtration System

INSTRUCTION FOR INSTALLATION, OPERATION, AND MAINTENANCE

⚠ DANGER

Understand manual before use. Operation of this device without understanding the manual and receiving proper training is a misuse of this equipment. Obtain safety information at tft.com/serial-number.

This instruction manual is intended to familiarize installers, end users, and maintenance personnel with the operation, servicing, and safety procedures associated with this product. This manual should be kept available to all operating and maintenance personnel.



TASK FORCE TIPS LLC
MADE IN USA · tft.com

3701 Innovation Way, Valparaiso, IN 46383-9327 USA
800-348-2686 · 219-462-6161 · Fax 219-464-7155

TABLE OF CONTENTS

- 1.0 MEANING OF SAFETY SIGNAL WORDS
- 2.0 GENERAL INFORMATION
 - 2.1 PART IDENTIFICATION
 - 2.2 SPECIFICATIONS
- 3.0 INSTALLATION
 - 3.1 MOUNTING
 - 3.2 WIRING
- 4.0 OPERATION
- 5.0 WARRANTY
- 6.0 MAINTENANCE
 - 6.1 FILTER LIFECYCLE
 - 6.1 CHANGING THE FILTER
 - 6.2 DISPOSING OF THE FILTER
- 7.0 REPAIR
- 8.0 OPERATION AND INSPECTION CHECKLIST

DANGER

PERSONAL RESPONSIBILITY CODE

The member companies of FEMSA that provide emergency response equipment and services want responders to know and understand the following:

1. **Firefighting and Emergency Response are inherently dangerous activities requiring proper training in their hazards and the use of extreme caution at all times.**
2. **IT IS YOUR RESPONSIBILITY** to read and understand any user's instructions, including purpose and limitations, provided with any piece of equipment you may be called on to use.
3. **IT IS YOUR RESPONSIBILITY** to know that you have been properly trained in Firefighting and/or Emergency Response and in the use, precautions, and care of any equipment you may be called upon to use.
4. **IT IS YOUR RESPONSIBILITY** to be in proper physical condition and to maintain the personal skill level required to operate any equipment you may be called upon to use.
5. **IT IS YOUR RESPONSIBILITY** to know that your equipment is in operable condition and has been maintained in accordance with the manufacturer's instructions.
6. Failure to follow these guidelines may result in death, burns or other severe injury.

Fire and Emergency Manufacturers and Service Association, Inc.
PO Box 147, Lynnfield, MA 01940 · www.FEMSA.org

© 2020 FEMSA. All Rights Reserved.

1.0 MEANING OF SAFETY SIGNAL WORDS

A safety related message is identified by a safety alert symbol and a signal word to indicate the level of risk involved with a particular hazard. Per ANSI Z535.6, the definitions of the four signal words are as follows:

- ⚠ DANGER** DANGER indicates a hazardous situation which, if not avoided, will result in death or serious injury.
- ⚠ WARNING** WARNING indicates a hazardous situation which, if not avoided, could result in death or serious injury.
- ⚠ CAUTION** CAUTION indicates a potentially hazardous situation which, if not avoided, could result in minor or moderate injury.
- NOTICE** NOTICE is used to address practices not related to physical injury.

2.0 GENERAL INFORMATION

The Crew Protect cabin air filtration system is connected to the truck power system to filter the air in the cabin anytime the truck is actively powered. Periodic replacement of filters ensures maximum filtration of harmful particulates, VOCs, viruses, bacteria, and mold.

2.1 PART IDENTIFICATION

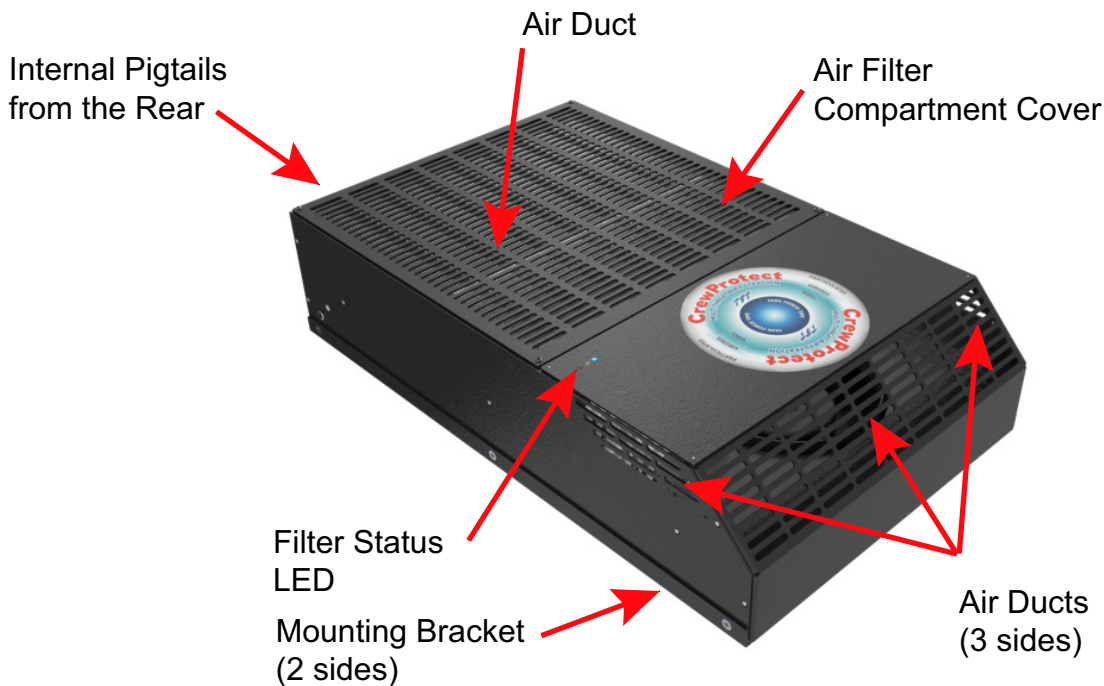


Figure 2.1

2.2 SPECIFICATIONS

Dimensions inch (mm)	20 x 12 x 4.5 (508 x 305 x 114)
Filter Protection	Particulates, VOCs, Viruses, Bacteria, Mold
Filter Status Indicator	Tri-color LED
Flow Rate	100 CFM (nominal)
Operating Pressure	1 Atmosphere
Current Draw	4A @ 12V or 2A @ 24V
Power Draw	40W (nominal)
Recommended Circuit Breaker	6 Amps
Sound (fan running)	60 dB (nominal)

Table 2.2

3.0 INSTALLATION

3.1 MOUNTING

NOTICE

To ensure proper air flow and function of the CrewProtect:

- Choose a location where there is at least 1" of free space around all air ducts.
- Keep air ducts free from obstruction by loose items such as clothing, paper, dirt, or equipment.
- Do not place heavy objects on the unit.
- Do not use the unit as a shelf.

1. Choose a mounting location.
2. To ensure proper hole location, use the full sized mounting template provided with the unit.
3. Secure the CrewProtect using (6) nuts and bolts (not provided).

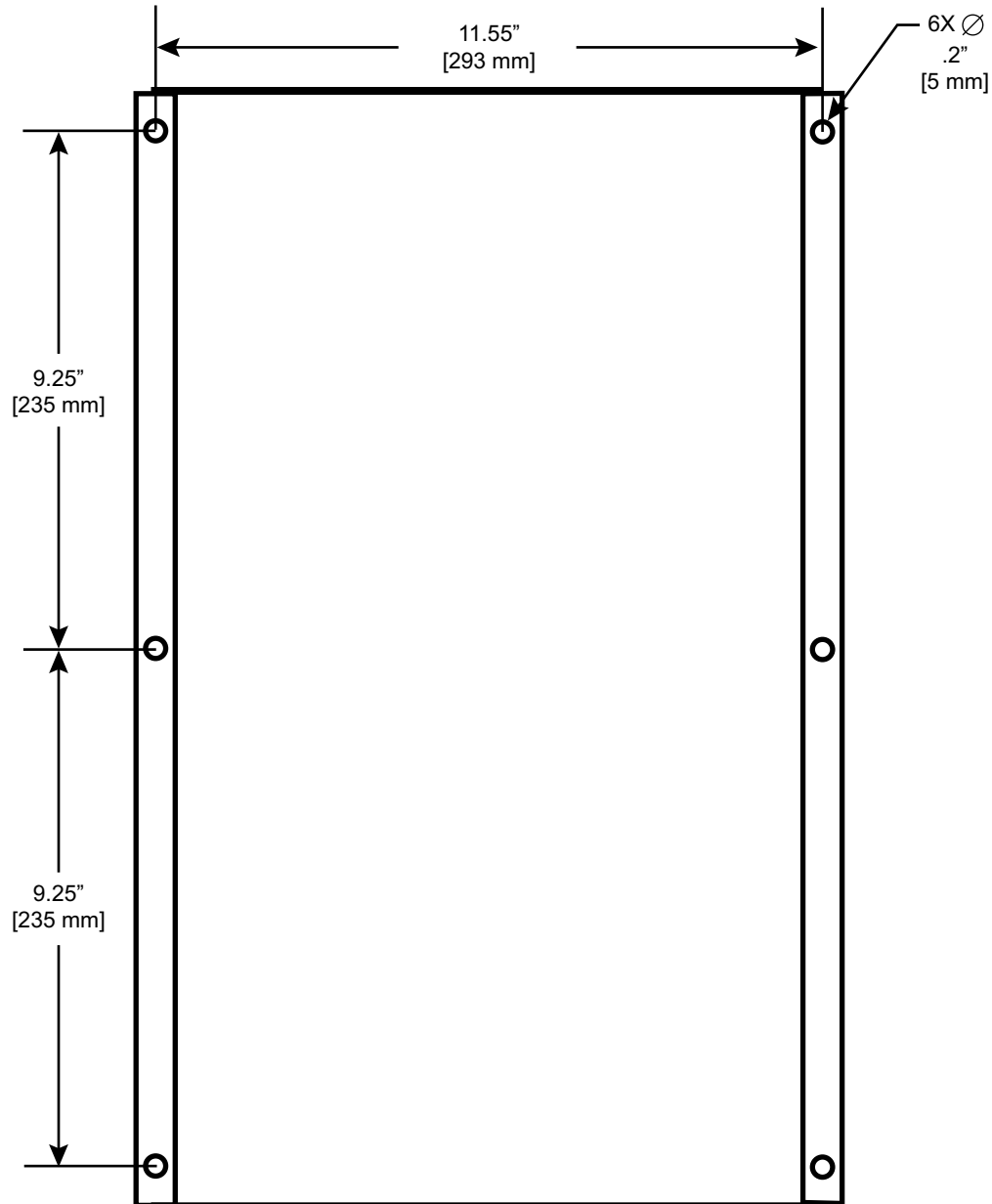


Figure 3.1

3.2 WIRING

The CrewProtect is wired to the truck electrical system, allowing continuous filtration of cabin air while the truck is actively powered. Use the provided wiring diagram to ensure proper wiring.

NOTICE

Always disconnect power before installing or servicing electrical components. Failure to do so could cause damage to the circuit boards.

- Requirements:
- Minimum Wire Gauge - 18 AWG
- Minimum Fuse - 6 amp slow blow fuse

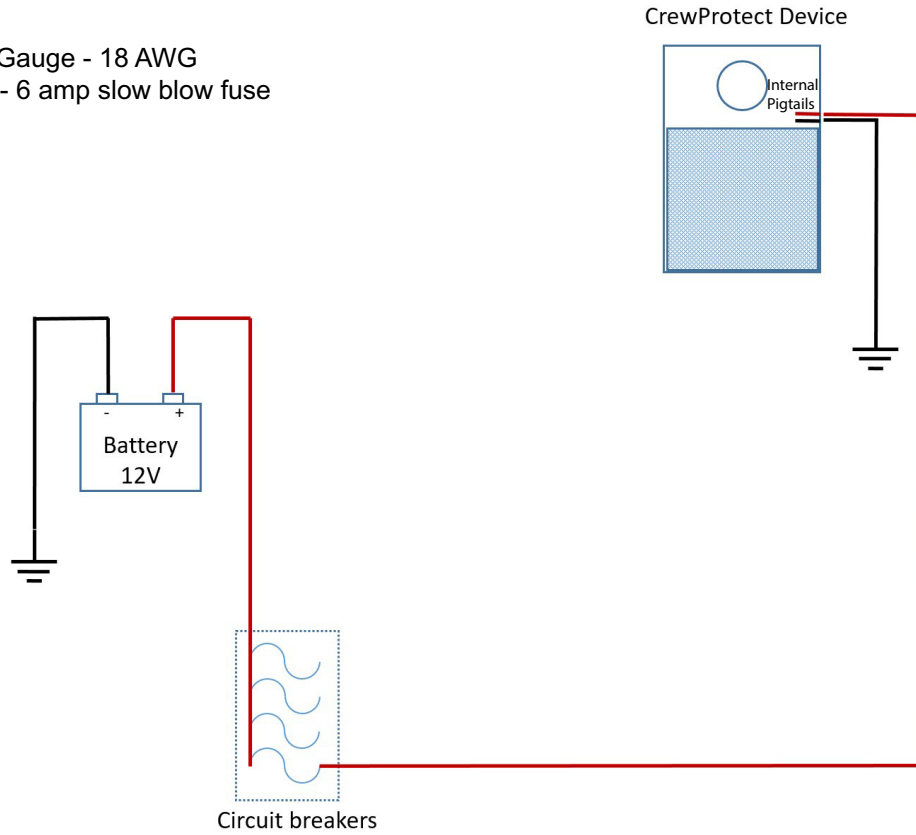


Figure 3.2

4.0 OPERATION

Because the CrewProtect is wired directly to the truck electrical system, continuous air filtration occurs the entire time the truck is actively powered.

Regular replacement of filters ensures optimal air filtration. See Section 6.0 on page 7 for filter lifecycle and replacement instructions.

5.0 WARRANTY

Task Force Tips LLC, 3701 Innovation Way, Valparaiso, Indiana 46383-9327 USA ("TFT") warrants to the original purchaser of its products ("equipment"), and to anyone to whom it is transferred, that the equipment shall be free from defects in material and workmanship during the three (3) year period from the date of purchase. TFT's obligation under this warranty is specifically limited to replacing or repairing the equipment (or its parts) which are shown by TFT's examination to be in a defective condition attributable to TFT. To qualify for this limited warranty, the claimant must return the equipment to TFT, at 3701 Innovation Way, Valparaiso, Indiana 46383-9327 USA, within a reasonable time after discovery of the defect. TFT will examine the equipment. If TFT determines that there is a defect attributable to it, TFT will correct the problem within a reasonable time. If the equipment is covered by this limited warranty, TFT will assume the expenses of repair.

If any defect attributable to TFT under this limited warranty cannot be reasonably cured by repair or replacement, TFT may elect to refund the purchase price of the equipment, less reasonable depreciation, in complete discharge of its obligations under this limited warranty. If TFT makes this election, claimant shall return the equipment to TFT free and clear of any liens and encumbrances.

This is a limited warranty. The original purchaser of the equipment, any person to whom it is transferred, and any person who is an intended or unintended beneficiary of the equipment, shall not be entitled to recover from TFT any consequential or incidental damages for injury to person and/or property resulting from any defective equipment manufactured or assembled by TFT.

It is agreed and understood that the price stated for the equipment is in part consideration for limiting TFT's liability. Some states do not allow the exclusion or limitation of incidental or consequential damages, so the above may not apply to you.

TFT shall have no obligation under this limited warranty if the equipment is, or has been, misused or neglected (including failure to provide reasonable maintenance) or if there have been accidents to the equipment or if it has been repaired or altered by someone else.

THIS IS A LIMITED EXPRESS WARRANTY ONLY. TFT EXPRESSLY DISCLAIMS WITH RESPECT TO THE EQUIPMENT ALL IMPLIED WARRANTIES OF MERCHANTABILITY AND ALL IMPLIED WARRANTIES OF FITNESS FOR A PARTICULAR PURPOSE. THERE IS NO WARRANTY OF ANY NATURE MADE BY TFT BEYOND THAT STATED IN THIS DOCUMENT.

This limited warranty gives you specific legal rights, and you may also have other rights which vary from state to state.

6.0 MAINTENANCE

6.1 FILTER LIFECYCLE

The filter will function for 1,800 hours of continuous usage or 6 months of intermittent use. The current condition of the filter is tracked via the three LED lights on the prominent face of the device with the following statuses:

Hours of Continuous Use		Months of Intermittent Use	LED Color
0-1500	or	0-4.9	Solid Blue
1501-1799		5-5.9	Solid Yellow
1800-1850		6-6.5	Solid Red
1850+		6.5+	Blinking Red (unit stops working)

Table 6.0

NOTICE

To ensure the device is optimally cleaning the cabin air, the filter should be changed when the LED color is YELLOW.

6.1 CHANGING THE FILTER

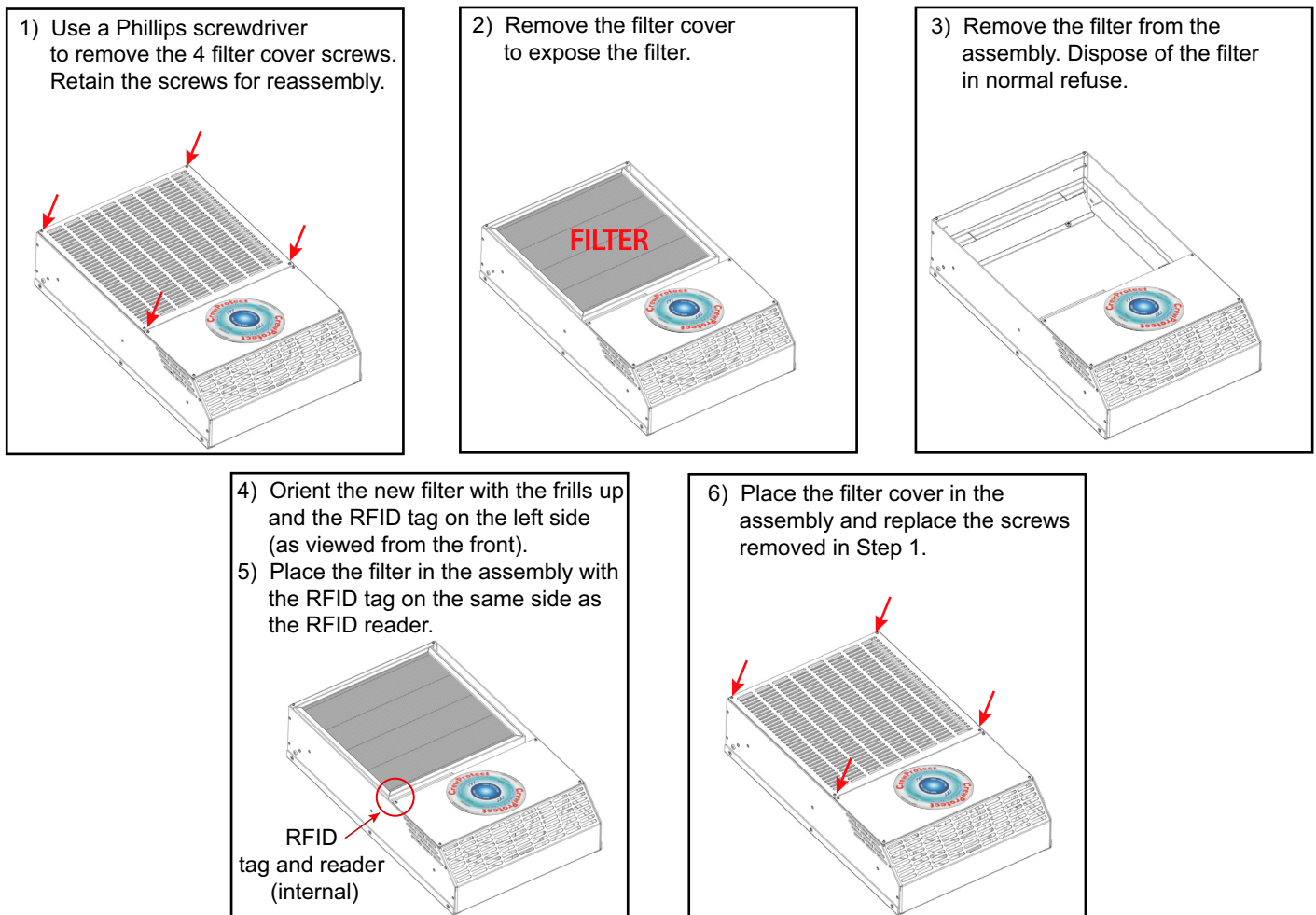


Figure 6.1

NOTICE

All replacement parts must be obtained from the manufacturer to assure proper performance and operation of the device.

6.2 DISPOSING OF THE FILTER

The filter material is designed to neutralize the toxins filtered. Used filters can be disposed of in normal refuse.

7.0 REPAIR

Factory service is available with repair time seldom exceeding one day in our facility. Factory serviced equipment is repaired by experienced technicians, tested to original specifications, and promptly returned. Any returns should include a note as to the nature of the problem and whom to reach in case of questions.

CAUTION

Any alterations to the product or its markings could diminish safety and constitutes a misuse of this product.

8.0 OPERATION AND INSPECTION CHECKLIST

BEFORE EACH USE and BEFORE BEING PLACED BACK IN SERVICE, the CrewProtect must be inspected to this checklist:

1. There is no obvious damage such as missing, broken or loose parts, damaged labels, etc.
2. The unit is securely fastened to the truck.
3. LED status lights indicating filter status are in the acceptable range (Blue or Yellow).
4. All air ducts are clean and unobstructed.
5. The area around the device is clean and free of loose debris.
6. There are no objects sitting on top of the device.
7. All markings are legible.

WARNING

Equipment failing any part of the checklist is unsafe for use and must have the problem corrected before use or being placed back into service. Operating equipment that has failed the checklist is a misuse of this equipment.